

Small globe valves of cast brass with threaded connection | PN16 | up to 120 °C

DIGICONTROL V-VUL...

Data sheet number 85002



Used in combination with S-KVA drive for unit valves for the control of heating zones, air secondary-treatment appliances and fan convectors. Valve and drive are assembled either by simply screwing together or by using the bayonet fitting. Nickel-plated (DN 10) valve body of cast brass, DN15 and DN20 of gunmetal with male thread, without cap nut. Spindle of stainless steel with soft-sealing valve cone. Characteristic line is approximately equal percentage. Stuffing box with double O-ring seal. The through valve is closed when the spindle is pressed in.

TECHNICAL DATA

Pressure stage	PN16
Overall length	In accordance with DIN 3841 T1
Leakage rate	0,0001 % of kvs
Characteristic line	Equal percentage
Cone	With soft seal made of EPDM
Bung socket	With double O-ring seal
Spindle	Stainless steel
Operating pressure	16 bar
Mounting	Male thread as per DIN EN ISO 228-1, Class B
Housing	Made of nickel-plated brass casting for DN10 and gun metal for DN15 and DN20
Operating temperature	+2...+120 °C

TYPE LIST

TYPE	DIAMETER NOMINAL	KVS	STROKE	CONNECTION
V-VUL10-0,16	DN 10	0.16 m ³ /h	4 mm	G 1/2 B
V-VUL10-0,40	DN 10	0.4 m ³ /h	4 mm	G 1/2 B
V-VUL10-0,63	DN 10	0.63 m ³ /h	4 mm	G 1/2 B
V-VUL10-1,00	DN 10	1.0 m ³ /h	4 mm	G 1/2 B
V-VUL10-1,60	DN 10	1.6 m ³ /h	4 mm	G 1/2 B
V-VUL15-3,50	DN 15	3.5 m ³ /h	4 mm	G 3/4 B
V-VUL15-2,50	DN 15	2.5 m ³ /h	4 mm	G 3/4 B
V-VUL20-4,50	DN 20	4.5 m ³ /h	4 mm	G 1 B

ACCESSORY

TYPE	DESCRIPTION
0378133010	1 threaded sleeve, R3/8 flat seal DN10 with cap nut and flat seal
0378133015	1 threaded sleeve, R1/2 flat seal DN15 with cap nut and flat seal
0378133020	1 threaded sleeve, R3/4 flat seal DN20 with cap nut and flat seal
0378134010	1 solder nipple, Ø 12; flat seal DN10, with cap nut and flat seal
0378134015	1 solder nipple, Ø 15; flat seal DN15, with cap nut and flat seal

◀ CONTINUED FROM PAGE 252

ACCESSORY

TYPE	DESCRIPTION
0378134020	1 solder nipple, Ø 22; flat seal DN20, with cap nut and flat seal

Small three-way valve with threaded connection | PN16 | up to 120 °C

DIGICONTROL V-BUL...

Data sheet number 85003



Used as a mixing, diverting or change-over valve in conjunction with S-KVA... drive for unit valves for controlling heating zones, air secondary-treatment appliances, fan convectors and two-wire systems with heat exchanger. Valve and drive are assembled either by simply screwing together or by using the bayonet fitting. Nickel-plated valve body of cast brass, with male thread, without cap nut. Spindle of stainless steel with soft-sealing valve cone for control load and proportioning load. Characteristic curve approximately equal percentage. The flow through the mixing passage has been reduced by 30%. Stuffing box with double O-ring seal. The control passage A-AB is closed when the spindle is pressed in.

TECHNICAL DATA

Pressure stage	PN16
Leakage rate	Control passage A-AB 0,0001 % of kvs, mixing passage B-AB approx. 0,1 % of kvs
Characteristic line	<ul style="list-style-type: none"> ■ Control passage equal-percentage ■ Mixing passage linear
Cone	With soft seal made of EPDM for control passage and mixing passage
Bung socket	With double O-ring seal
Spindle	Stainless steel
Operating pressure	16 bar
Mounting	Male thread as per DIN EN ISO 228-1, Class B
Housing	Made of nickel-plated brass
Operating temperature	+2...+120 °C

TYPE LIST

TYPE	DIAMETER NOMINAL	KVS	STROKE	CONNECTION
V-BUL010-0,40	DN 10	0.4 m ³ /h	3.7 mm	G 1/2 B
V-BUL010-0,63	DN 10	0.63 m ³ /h	3.7 mm	G 1/2 B
V-BUL010-1,00	DN 10	1.0 m ³ /h	3.7 mm	G 1/2 B
V-BUL010-1,60	DN 10	1.6 m ³ /h	3.7 mm	G 1/2 B
V-BUL015-2,50	DN 15	2.5 m ³ /h	3.7 mm	G 3/4 B
V-BUL015-4,00	DN 15	4.0 m ³ /h	3.7 mm	G 1/2 B
V-BUL020-5,00	DN 20	5.0 m ³ /h	3.7 mm	G 1 B

ACCESSORY

TYPE	DESCRIPTION
0378133010	1 threaded sleeve, R3/8 flat seal DN10 with cap nut and flat seal
0378133015	1 threaded sleeve, R1/2 flat seal DN15 with cap nut and flat seal
0378133020	1 threaded sleeve, R3/4 flat seal DN20 with cap nut and flat seal
0378134010	1 solder nipple, Ø 12; flat seal DN10, with cap nut and flat seal

◀ CONTINUED FROM PAGE 254

ACCESSORY

TYPE	DESCRIPTION
0378134015	1 solder nipple, Ø 15; flat seal DN15, with cap nut and flat seal
0378134020	1 solder nipple, Ø 22; flat seal DN20, with cap nut and flat seal

Thermoelectr. Actuators with Positioner for small Valves, continuous, 24 V

DIGICONTROL S-KVA-SA | S-KVA-SD

Data sheet number 84007



Thermoelectric actuators for the discrete control of heating and cooling systems in direct proportion to the applied control voltage. The control of the actuators is performed by a 0...10 V DC signal via an automation station of series DIGICONTROL ems... or a room controller of series DIGICONTROL R4D.

Features:

- Modern design
- Short response times, resulting in improved control response
- Closing point verification and possible adaptation during operation
- Complete compatibility to the valve adapter system
- Simple plug-in installation
- 360 degree installation position
- Patented 100 % protection in case of leaky valves
- First open function
- Adaptation check on the valve
- Plug-in connecting cable
- Alignment aid on the valve
- Compact size, small dimensions
- All-round function display
- Noiseless and maintenance-free
- High functional safety and long service life
- Certified by TÜV

TECHNICAL DATA

Resistance of control voltage input	100 kΩ
Actuating time	30 s/mm
Control direction	NC (normally closed)
Overvoltage strength	Min. 1 kV (according to EN 60730-1)
Media temperature	0...+100 °C
Inrush current	< 320 mA during max. 2 minutes
Mounting	Connection line 3x 0.22 mm ² PVC / white / 1 m / plug-in
Weight	111 g
Housing	Material: Polyamide, colour white (RAL 9003)
Protection class	III
Protection class	IP54
Storage temperature	-25...+60 °C
Operating temperature	0...+60 °C
Standards/rules/guidelines/approvals	EN 60730

TYPE LIST

TYPE	VOLTAGE	ACTUATOR TRAVEL	ACTUATING FORCE	POWER CONSUMPTION
S-KVA-SA	24 V AC, -10...+20 %, 50-60 Hz, 0...10 V	4.0 mm (optional 5.0 mm)	100 N	1 W
S-KVA-SD	24 V DC, -20...+20 %, 0...10 V	4.0 mm (optional 5.0 mm)	100 N	1 W
S-KVA-SA-6_5	24 V AC, 0-10 V	6.5 mm	125 N	1.2 W

◀ CONTINUED FROM PAGE 256

TYPE LIST

TYPE	VOLTAGE	ACTUATOR TRAVEL	ACTUATING FORCE	POWER CONSUMPTION
S-KVA-SD-6_5	24 V DC, 0-10 V	6.5 mm	125 N	1.2 W

ACCESSORY

TYPE	DESCRIPTION
S-KVA-VA16	Valve adapter for installation on Herz valves of type TS-90
S-KVA-VA39	Valve adapter for installation on Oventrop valves M30x1 (before 1997)
S-KVA-VA152HK	Valve adapter for installation on V-VARIO-DC
S-KVA-VA16H-SK	Valve adapter for installation on Herz valves of type TS-90 Please note: Only when using the protective cover S-KVA-SK1004.
S-KVA-VA39H-SK	Valve adapter for installation on Oventrop valves M30x1 (before 1997) Please note: Only when using the protective cover S-KVA-SK1004.
S-KVA-VA59H-SK	Valve adapter for installation on Danfoss valves of type RAVL (d=26mm) Please note: Only when using the protective cover S-KVA-SK1004.
S-KVA-VA78-SK	Valve adapter for installation on Danfoss valves of type RA 2000 (e.g. RA-N, d=22mm) Please note: Only when using the protective cover S-KVA-SK1004.
S-KVA-VA59	Valve adapter for installation on Danfoss valves of type RAVL (d=26mm)
S-KVA-VA72	Valve adapter for installation on Danfoss valves of type RAV (d=34mm) Please note: Using the protective cover S-KVA-SK1004 is not possible.
S-KVA-VA78	Valve adapter for installation on Danfoss valves of type RA 2000 (e.g. RA-N, d=22mm)
S-KVA-VA80	Valve adapter for installation on DIGICONTROL valves of type V-VUL..., V-BUL..., V-VXL... Valve adapter for installation on Oventrop valves M30x1.5
S-KVA-SK1004	Protective cover against vandalism and theft Please note: When using the protective cover, you always have to apply the corresponding valve adapter S-KVA-VA...-SK.
S-KVA-VA80H-SK	Valve adapter for installation on DIGICONTROL valves of type V-VUL..., V-BUL..., V-VXL... Valve adapter for installation on Oventrop valves M30x1.5 Please note: Only when using the protective cover S-KVA-SK1004.
S-KVA-VA41	Valve adapter for installation on DIGICONTROL valves of type V-AB-QM DN10 to DN32
S-KVA-VA41H-SK	Valve adapter for installation on DIGICONTROL valves of type V-AB-QM DN10 to DN32 Attention: Only when using the protective cap S-KVA-SK1004.

Thermoelectr. Actuator for small Valve, Two-Point, 24/230 V

DIGICONTROL S-KVA-B24 | S-KVA-B230

Data sheet number 84012



Thermoelectric actuators for opening and closing valves on heating circuit distributors of surface heating and cooling systems. The control of the actuators is performed by a two point output or pulse-width modulation signal via an automation station of series DIGICONTROL ems... or a room controller of series DIGICONTROL R4D.

Features:

- Modern design
- Complete compatibility to the valve adapter system
- Simple plug-in installation
- 360 degree installation position
- Patented 100 % protection in case of leaky valves
- First open function
- Adaptation check on the valve
- Alignment aid on the valve
- Compact size, small dimensions
- All-round function display
- Noiseless and maintenance-free
- High functional safety and long service life
- Surge protection guarantee
- Certified by TÜV

TECHNICAL DATA

Control	Two-point output or pulse-width modulation
Actuating time	Approx. 3.5 min
Control direction	NC (normally closed) optional NO (open when de-energized) possible
Overvoltage strength	Min. 2.5 kV (according to EN 60730-1)
Media temperature	0...+100 °C
Mounting	Connection line 2x 0.75 mm ² PVC / light grey / 1 m
Weight	100 g
Housing	Material: Polyamide, colour light Grey (RAL 7035)
Protection class	IP54
Storage temperature	-25...+60 °C
Operating temperature	0...+60 °C
Standards/rules/guidelines/ approvals	EN 60730

TYPE LIST

TYPE	VOLTAGE	ACTUATOR TRAVEL	ACTUATING FORCE	POWER CONSUMPTION
S-KVA-B24	24 V AC/DC, -10...+20 %	4.0 mm (optional 5.0 mm)	100 N	1 W
S-KVA-B230	230 V AC, -10...+10 %, 50/60 Hz	4.0 mm (optional 5.0 mm)	100 N	1 W
S-KVA-B24-6_5	24 V NC	6.5 mm	125 N	1.2 W
S-KVA-B230-6_5	230 V NC	6.5 mm	125 N	1.2 W

◀ CONTINUED FROM PAGE 258

ACCESSORY

TYPE	DESCRIPTION
S-KVA-VA152HK	Valve adapter for installation on V-VARIO-DC
S-KVA-VA78-SK	Valve adapter for installation on Danfoss valves of type RA 2000 (e.g. RA-N, d=22mm) Please note: Only when using the protective cover S-KVA-SK1004.
S-KVA-VA41H-SK	Valve adapter for installation on DIGICONTROL valves of type V-AB-QM DN10 to DN32 Attention: Only when using the protective cap S-KVA-SK1004.
S-KVA-VA16	Valve adapter for installation on Herz valves of type TS-90
S-KVA-VA59	Valve adapter for installation on Danfoss valves of type RAVL (d=26mm)
S-KVA-VA80H-SK	Valve adapter for installation on DIGICONTROL valves of type V-VUL..., V-BUL..., V-VXL... Valve adapter for installation on Oventrop valves M30x1.5 Please note: Only when using the protective cover S-KVA-SK1004.
S-KVA-VA72	Valve adapter for installation on Danfoss valves of type RAV (d=34mm) Please note: Using the protective cover S-KVA-SK1004 is not possible.
S-KVA-VA39H-SK	Valve adapter for installation on Oventrop valves M30x1 (before 1997) Please note: Only when using the protective cover S-KVA-SK1004.
S-KVA-VA39	Valve adapter for installation on Oventrop valves M30x1 (before 1997)
S-KVA-VA80	Valve adapter for installation on DIGICONTROL valves of type V-VUL..., V-BUL..., V-VXL... Valve adapter for installation on Oventrop valves M30x1.5
S-KVA-SK1004	Protective cover against vandalism and theft Please note: When using the protective cover, you always have to apply the corresponding valve adapter S-KVA-VA...-SK.
S-KVA-VA59H-SK	Valve adapter for installation on Danfoss valves of type RAVL (d=26mm) Please note: Only when using the protective cover S-KVA-SK1004.
S-KVA-VA41	Valve adapter for installation on DIGICONTROL valves of type V-AB-QM DN10 to DN32
S-KVA-VA78	Valve adapter for installation on Danfoss valves of type RA 2000 (e.g. RA-N, d=22mm)
S-KVA-VA16H-SK	Valve adapter for installation on Herz valves of type TS-90 Please note: Only when using the protective cover S-KVA-SK1004.

Pressure-independent 6-way ball valve

DIGICONTROL V-SK-IQ...

Data sheet number 85608



V-SK-IQ... is an electronic pressure-independent 6-way control ball valve with integrated ultrasonic measuring unit for setting and controlling a heating/cooling consumer in 4-pipe systems. The control is pressure-independent through permanent flow rate monitoring without minimum differential pressure. Control, changeover and shut-off of the water quantities is performed via only one mobile component. Intelligent integrated flushing function by completely opening and switching off the pressure-independent control function. Control and regulation is analogue via 0-10 V, digital with BACnet or Modbus (selectable). Setting and reading of all parameters such as set point and current water quantities, flushing function, bus addressing, control signals, etc. is possible via Bluetooth with Smartphone, Modbus und BACnet MS/TP. The large Bluetooth range enables adjustment through ceilings, grids and from outside the room. LEDs provide visual indication of the status of power supply and communication.

TECHNICAL DATA

Voltage	24 V AC (-20 % / +20 %), 50 Hz / 24 V DC (-10 % / +10 %)
Medium	Water (Glykol free)
Inputs	<ul style="list-style-type: none"> ■ 0 - 10 Vdc (0.17 mA) ■ 0.5 - 4.5 Vdc heating mode 100 % - 0 % flow rate heating ■ 5.5 - 9.5 Vdc cooling mode 0 % - 100 % flow rate cooling
Media temperature	+5...+90 °C
Flow measurement	Permanent, ultrasound
Flow characteristic	Linear, equal-percentage
Leakage rate	Close-sealed
Power consumption	In operation 3 W (4 VA), in standby 1.5 W (2 VA)
Setting range	DN 15: 3-1400 l/h, DN 25: 3-2500 l/h
Accuracy	3 l/h
Mounting	6x external thread
Communication	RS 485, Modbus/RTU, BACnet MS/TP, Bluetooth 4.0ACn
Protection class	IP54
Standards/rules/guidelines/ approvals	CE according to 2004/108/EC

TYPE LIST

TYPE	PRESSURE STAGE	KVS
V-SK-IQ-15	PN16	1.4 m ³ /h
V-SK-IQ-25	PN16	2.5 m ³ /h

6-way ball valve for two sequences

DIGICONTROL V-BR616...

Data sheet number 85610

The 6-way ball valves of the V-BR616 series enable the control of a single consumer from two different thermal energy sources. A changeover between two energy sources is possible in the position 0° and 90°. The centre position (45°) allows closing the supply of both energy sources.

The valve is supplied by means of a four tube system. It has external threads. Corresponding connection kits with internal threads are available as accessories.

The fittings are furnished with an electric rotary drive, S-M106, and can be integrated in building automation and control systems by means of a continuous signal.

Features:

- Can be used in heating-, ventilation and air-conditioning plants for regulating the heating-water and cold-water flow
- Screw joint connection fitting, flat sealing
- Tool-free actuator mounting, installation possible in four positions
- Internal thread on the lower side of the valve for fixing on components and support elements

**TECHNICAL DATA**

Medium	Cold and warm water, water with glycol up to max. 50 % vol. 90°
Leakage rate	Leakage rate A, bubble-tight (EN 12666-1)
Differential pressure	2 bar
Mounting	Male thread as per DIN EN ISO 228-1, Class B
Installation position	Upright to horizontal
Housing	Valve body: forging brass CW617N Seals: PTFE
Operating temperature	+5...+90 °C

TYPE LIST

TYPE	KVS SEQUENCE I	KVS SEQUENCE II	NOMINAL WIDTH	PRESSURE STAGE	CONNECTION
V-BR616-DN15-0,25-0,25	0.25 m ³ /h	0.25 m ³ /h	15	PN16	G 1/2"
V-BR616-DN15-0,25-0,4	0.25 m ³ /h	0.4 m ³ /h	15	PN16	G 1/2"
V-BR616-DN15-0,25-0,65	0.25 m ³ /h	0.65 m ³ /h	15	PN16	G 1/2"
V-BR616-DN15-0,25-1	0.25 m ³ /h	1 m ³ /h	15	PN16	G 1/2"
V-BR616-DN15-0,25-1,3	0.25 m ³ /h	1.3 m ³ /h	15	PN16	G 1/2"
V-BR616-DN15-0,25-1,6	0.25 m ³ /h	1.6 m ³ /h	15	PN16	G 1/2"
V-BR616-DN15-0,25-1,9	0.25 m ³ /h	1.9 m ³ /h	15	PN16	G 1/2"

◀ CONTINUED FROM PAGE 261

TYPE LIST

TYPE	KVS SEQUENCE I	KVS SEQUENCE II	NOMINAL WIDTH	PRESSURE STAGE	CONNECTION
V-BR616-DN15-0,4-0,25	0.4 m ³ /h	0.25 m ³ /h	15	PN16	G 1/2"
V-BR616-DN15-0,4-0,4	0.4 m ³ /h	0.4 m ³ /h	15	PN16	G 1/2"
V-BR616-DN15-0,4-0,65	0.4 m ³ /h	0.65 m ³ /h	15	PN16	G 1/2"
V-BR616-DN15-0,4-1	0.4 m ³ /h	1 m ³ /h	15	PN16	G 1/2"
V-BR616-DN15-0,4-1,3	0.4 m ³ /h	1.3 m ³ /h	15	PN16	G 1/2"
V-BR616-DN15-0,4-1,6	0.4 m ³ /h	1.6 m ³ /h	15	PN16	G 1/2"
V-BR616-DN15-0,4-1,9	0.4 m ³ /h	1.9 m ³ /h	15	PN16	G 1/2"
V-BR616-DN15-0,65-0,25	0.65 m ³ /h	0.25 m ³ /h	15	PN16	G 1/2"
V-BR616-DN15-0,65-0,4	0.65 m ³ /h	0.4 m ³ /h	15	PN16	G 1/2"
V-BR616-DN15-0,65-0,65	0.65 m ³ /h	0.65 m ³ /h	15	PN16	G 1/2"
V-BR616-DN15-0,65-1	0.65 m ³ /h	1 m ³ /h	15	PN16	G 1/2"
V-BR616-DN15-0,65-1,3	0.65 m ³ /h	1.3 m ³ /h	15	PN16	G 1/2"
V-BR616-DN15-0,65-1,6	0.65 m ³ /h	1.6 m ³ /h	15	PN16	G 1/2"
V-BR616-DN15-0,65-1,9	0.65 m ³ /h	1.9 m ³ /h	15	PN16	G 1/2"
V-BR616-DN15-1-0,25	1 m ³ /h	0.25 m ³ /h	15	PN16	G 1/2"
V-BR616-DN15-1-0,4	1 m ³ /h	0.4 m ³ /h	15	PN16	G 1/2"
V-BR616-DN15-1-0,65	1 m ³ /h	0.65 m ³ /h	15	PN16	G 1/2"
V-BR616-DN15-1-1	1 m ³ /h	1 m ³ /h	15	PN16	G 1/2"
V-BR616-DN15-1-1,3	1 m ³ /h	1.3 m ³ /h	15	PN16	G 1/2"
V-BR616-DN15-1-1,6	1 m ³ /h	1.6 m ³ /h	15	PN16	G 1/2"
V-BR616-DN15-1-1,9	1 m ³ /h	1.9 m ³ /h	15	PN16	G 1/2"
V-BR616-DN15-1,3-0,25	1.3 m ³ /h	0.25 m ³ /h	15	PN16	G 1/2"

◀ CONTINUED FROM PAGE 262

TYPE LIST

TYPE	KVS SEQUENCE I	KVS SEQUENCE II	NOMINAL WIDTH	PRESSURE STAGE	CONNECTION
V-BR616-DN15-1,3-0,4	1.3 m ³ /h	0.4 m ³ /h	15	PN16	G 1/2"
V-BR616-DN15-1,3-0,65	1.3 m ³ /h	0.65 m ³ /h	15	PN16	G 1/2"
V-BR616-DN15-1,3-1	1.3 m ³ /h	1 m ³ /h	15	PN16	G 1/2"
V-BR616-DN15-1,3-1,3	1.3 m ³ /h	1.3 m ³ /h	15	PN16	G 1/2"
V-BR616-DN15-1,3-1,6	1.3 m ³ /h	1.6 m ³ /h	15	PN16	G 1/2"
V-BR616-DN15-1,3-1,9	1.3 m ³ /h	1.9 m ³ /h	15	PN16	G 1/2"
V-BR616-DN15-1,6-0,25	1.6 m ³ /h	0.25 m ³ /h	15	PN16	G 1/2"
V-BR616-DN15-1,6-0,4	1.6 m ³ /h	0.4 m ³ /h	15	PN16	G 1/2"
V-BR616-DN15-1,6-0,65	1.6 m ³ /h	0.65 m ³ /h	15	PN16	G 1/2"
V-BR616-DN15-1,6-1	1.6 m ³ /h	1 m ³ /h	15	PN16	G 1/2"
V-BR616-DN15-1,6-1,3	1.6 m ³ /h	1.3 m ³ /h	15	PN16	G 1/2"
V-BR616-DN15-1,6-1,6	1.6 m ³ /h	1.6 m ³ /h	15	PN16	G 1/2"
V-BR616-DN15-1,6-1,9	1.6 m ³ /h	1.9 m ³ /h	15	PN16	G 1/2"
V-BR616-DN15-1,9-0,25	1.9 m ³ /h	0.25 m ³ /h	15	PN16	G 1/2"
V-BR616-DN15-1,9-0,4	1.9 m ³ /h	0.4 m ³ /h	15	PN16	G 1/2"
V-BR616-DN15-1,9-0,65	1.9 m ³ /h	0.65 m ³ /h	15	PN16	G 1/2"
V-BR616-DN15-1,9-1	1.9 m ³ /h	1 m ³ /h	15	PN16	G 1/2"
V-BR616-DN15-1,9-1,3	1.9 m ³ /h	1.3 m ³ /h	15	PN16	G 1/2"
V-BR616-DN15-1,9-1,6	1.9 m ³ /h	1.6 m ³ /h	15	PN16	G 1/2"
V-BR616-DN15-1,9-1,9	1.9 m ³ /h	1.9 m ³ /h	15	PN16	G 1/2"
V-BR616-DN25-0,25-0,25	0.25 m ³ /h	0.25 m ³ /h	25	PN16	G 3/4"
V-BR616-DN25-0,25-0,4	0.25 m ³ /h	0.4 m ³ /h	25	PN16	G 3/4"

CONTINUED ON PAGE 264 ▶

◀ CONTINUED FROM PAGE 263

TYPE LIST

TYPE	KVS SEQUENCE I	KVS SEQUENCE II	NOMINAL WIDTH	PRESSURE STAGE	CONNECTION
V-BR616-DN25-0,25-0,65	0.25 m ³ /h	0.65 m ³ /h	25	PN16	G 3/4"
V-BR616-DN25-0,25-1	0.25 m ³ /h	1 m ³ /h	25	PN16	G 3/4"
V-BR616-DN25-0,25-1,3	0.25 m ³ /h	1.3 m ³ /h	25	PN16	G 3/4"
V-BR616-DN25-0,25-1,6	0.25 m ³ /h	1.6 m ³ /h	25	PN16	G 3/4"
V-BR616-DN25-0,25-2,5	0.25 m ³ /h	2.5 m ³ /h	25	PN16	G 3/4"
V-BR616-DN25-0,25-3,45	0.25 m ³ /h	3.45 m ³ /h	25	PN16	G 3/4"
V-BR616-DN25-0,25-4,25	0.25 m ³ /h	4.25 m ³ /h	25	PN16	G 3/4"
V-BR616-DN25-0,4-0,25	0.4 m ³ /h	0.25 m ³ /h	25	PN16	G 3/4"
V-BR616-DN25-0,4-0,4	0.4 m ³ /h	0.4 m ³ /h	25	PN16	G 3/4"
V-BR616-DN25-0,4-0,65	0.4 m ³ /h	0.65 m ³ /h	25	PN16	G 3/4"
V-BR616-DN25-0,4-1	0.4 m ³ /h	1 m ³ /h	25	PN16	G 3/4"
V-BR616-DN25-0,4-1,3	0.4 m ³ /h	1.3 m ³ /h	25	PN16	G 3/4"
V-BR616-DN25-0,4-1,6	0.4 m ³ /h	1.6 m ³ /h	25	PN16	G 3/4"
V-BR616-DN25-0,4-2,5	0.4 m ³ /h	2.5 m ³ /h	25	PN16	G 3/4"
V-BR616-DN25-0,4-3,45	0.4 m ³ /h	3.45 m ³ /h	25	PN16	G 3/4"
V-BR616-DN25-0,4-4,25	0.4 m ³ /h	4.25 m ³ /h	25	PN16	G 3/4"
V-BR616-DN25-0,65-0,25	0.65 m ³ /h	0.25 m ³ /h	25	PN16	G 3/4"
V-BR616-DN25-0,65-0,4	0.65 m ³ /h	0.4 m ³ /h	25	PN16	G 3/4"
V-BR616-DN25-0,65-0,65	0.65 m ³ /h	0.65 m ³ /h	25	PN16	G 3/4"
V-BR616-DN25-0,65-1	0.65 m ³ /h	1 m ³ /h	25	PN16	G 3/4"
V-BR616-DN25-0,65-1,3	0.65 m ³ /h	1.3 m ³ /h	25	PN16	G 3/4"
V-BR616-DN25-0,65-1,6	0.65 m ³ /h	1.6 m ³ /h	25	PN16	G 3/4"

◀ CONTINUED FROM PAGE 264

TYPE LIST

TYPE	KVS SEQUENCE I	KVS SEQUENCE II	NOMINAL WIDTH	PRESSURE STAGE	CONNECTION
V-BR616-DN25-0,65-2,5	0.65 m ³ /h	2.5 m ³ /h	25	PN16	G 3/4"
V-BR616-DN25-0,65-3,45	0.65 m ³ /h	3.45 m ³ /h	25	PN16	G 3/4"
V-BR616-DN25-0,65-4,25	0.65 m ³ /h	4.25 m ³ /h	25	PN16	G 3/4"
V-BR616-DN25-1-0,25	1 m ³ /h	0.25 m ³ /h	25	PN16	G 3/4"
V-BR616-DN25-1-0,4	1 m ³ /h	0.4 m ³ /h	25	PN16	G 3/4"
V-BR616-DN25-1-0,65	1 m ³ /h	0.65 m ³ /h	25	PN16	G 3/4"
V-BR616-DN25-1-1	1 m ³ /h	1 m ³ /h	25	PN16	G 3/4"
V-BR616-DN25-1-1,3	1 m ³ /h	1.3 m ³ /h	25	PN16	G 3/4"
V-BR616-DN25-1-1,6	1 m ³ /h	1.6 m ³ /h	25	PN16	G 3/4"
V-BR616-DN25-1-2,5	1 m ³ /h	2.5 m ³ /h	25	PN16	G 3/4"
V-BR616-DN25-1-3,45	1 m ³ /h	3.45 m ³ /h	25	PN16	G 3/4"
V-BR616-DN25-1-4,25	1 m ³ /h	4.25 m ³ /h	25	PN16	G 3/4"
V-BR616-DN25-1,3-0,25	1.3 m ³ /h	0.25 m ³ /h	25	PN16	G 3/4"
V-BR616-DN25-1,3-0,4	1.3 m ³ /h	0.4 m ³ /h	25	PN16	G 3/4"
V-BR616-DN25-1,3-0,65	1.3 m ³ /h	0.65 m ³ /h	25	PN16	G 3/4"
V-BR616-DN25-1,3-1	1.3 m ³ /h	1 m ³ /h	25	PN16	G 3/4"
V-BR616-DN25-1,3-1,3	1.3 m ³ /h	1.3 m ³ /h	25	PN16	G 3/4"
V-BR616-DN25-1,3-1,6	1.3 m ³ /h	1.6 m ³ /h	25	PN16	G 3/4"
V-BR616-DN25-1,3-2,5	1.3 m ³ /h	2.5 m ³ /h	25	PN16	G 3/4"
V-BR616-DN25-1,3-3,45	1.3 m ³ /h	3.45 m ³ /h	25	PN16	G 3/4"
V-BR616-DN25-1,3-4,25	1.3 m ³ /h	4.25 m ³ /h	25	PN16	G 3/4"
V-BR616-DN25-1,6-0,25	1.6 m ³ /h	0.25 m ³ /h	25	PN16	G 3/4"

CONTINUED ON PAGE 266 ▶

◀ CONTINUED FROM PAGE 265

TYPE LIST					
TYPE	KVS SEQUENCE I	KVS SEQUENCE II	NOMINAL WIDTH	PRESSURE STAGE	CONNECTION
V-BR616-DN25-1,6-0,4	1.6 m ³ /h	0.4 m ³ /h	25	PN16	G 3/4"
V-BR616-DN25-1,6-0,65	1.6 m ³ /h	0.65 m ³ /h	25	PN16	G 3/4"
V-BR616-DN25-1,6-1	1.6 m ³ /h	1 m ³ /h	25	PN16	G 3/4"
V-BR616-DN25-1,6-1,3	1.6 m ³ /h	1.3 m ³ /h	25	PN16	G 3/4"
V-BR616-DN25-1,6-1,6	1.6 m ³ /h	1.6 m ³ /h	25	PN16	G 3/4"
V-BR616-DN25-1,6-2,5	1.6 m ³ /h	2.5 m ³ /h	25	PN16	G 3/4"
V-BR616-DN25-1,6-3,45	1.6 m ³ /h	3.45 m ³ /h	25	PN16	G 3/4"
V-BR616-DN25-1,6-4,25	1.6 m ³ /h	4.25 m ³ /h	25	PN16	G 3/4"
V-BR616-DN25-2,5-0,25	2.5 m ³ /h	0.25 m ³ /h	25	PN16	G 3/4"
V-BR616-DN25-2,5-0,4	2.5 m ³ /h	0.4 m ³ /h	25	PN16	G 3/4"
V-BR616-DN25-2,5-0,65	2.5 m ³ /h	0.65 m ³ /h	25	PN16	G 3/4"
V-BR616-DN25-2,5-1	2.5 m ³ /h	1 m ³ /h	25	PN16	G 3/4"
V-BR616-DN25-2,5-1,3	2.5 m ³ /h	1.3 m ³ /h	25	PN16	G 3/4"
V-BR616-DN25-2,5-1,6	2.5 m ³ /h	1.6 m ³ /h	25	PN16	G 3/4"
V-BR616-DN25-2,5-2,5	2.5 m ³ /h	2.5 m ³ /h	25	PN16	G 3/4"
V-BR616-DN25-2,5-3,45	2.5 m ³ /h	3.45 m ³ /h	25	PN16	G 3/4"
V-BR616-DN25-2,5-4,25	2.5 m ³ /h	4.25 m ³ /h	25	PN16	G 3/4"
V-BR616-DN25-3,45-0,25	3.45 m ³ /h	0.25 m ³ /h	25	PN16	G 3/4"
V-BR616-DN25-3,45-0,4	3.45 m ³ /h	0.4 m ³ /h	25	PN16	G 3/4"
V-BR616-DN25-3,45-0,65	3.45 m ³ /h	0.65 m ³ /h	25	PN16	G 3/4"
V-BR616-DN25-3,45-1	3.45 m ³ /h	1 m ³ /h	25	PN16	G 3/4"
V-BR616-DN25-3,45-1,3	3.45 m ³ /h	1.3 m ³ /h	25	PN16	G 3/4"

◀ CONTINUED FROM PAGE 266

TYPE LIST

TYPE	KVS SEQUENCE I	KVS SEQUENCE II	NOMINAL WIDTH	PRESSURE STAGE	CONNECTION
V-BR616-DN25-3,45-1,6	3.45 m ³ /h	1.6 m ³ /h	25	PN16	G 3/4"
V-BR616-DN25-3,45-2,5	3.45 m ³ /h	2.5 m ³ /h	25	PN16	G 3/4"
V-BR616-DN25-3,45-3,45	3.45 m ³ /h	3.45 m ³ /h	25	PN16	G 3/4"
V-BR616-DN25-3,45-4,25	3.45 m ³ /h	4.25 m ³ /h	25	PN16	G 3/4"
V-BR616-DN25-4,25-0,25	4.25 m ³ /h	0.25 m ³ /h	25	PN16	G 3/4"
V-BR616-DN25-4,25-0,4	4.25 m ³ /h	0.4 m ³ /h	25	PN16	G 3/4"
V-BR616-DN25-4,25-0,65	4.25 m ³ /h	0.65 m ³ /h	25	PN16	G 3/4"
V-BR616-DN25-4,25-1	4.25 m ³ /h	1 m ³ /h	25	PN16	G 3/4"
V-BR616-DN25-4,25-1,3	4.25 m ³ /h	1.3 m ³ /h	25	PN16	G 3/4"
V-BR616-DN25-4,25-1,6	4.25 m ³ /h	1.6 m ³ /h	25	PN16	G 3/4"
V-BR616-DN25-4,25-2,5	4.25 m ³ /h	2.5 m ³ /h	25	PN16	G 3/4"
V-BR616-DN25-4,25-3,45	4.25 m ³ /h	3.45 m ³ /h	25	PN16	G 3/4"
V-BR616-DN25-4,25-4,25	4.25 m ³ /h	4.25 m ³ /h	25	PN16	G 3/4"

ACCESSORY

TYPE	DESCRIPTION
V-BR616-DN25-ISOL	Acoustic classing for 6-way ball valve, DN25
V-BR616-DN15-ISOL	Acoustic classing for 6-way ball valve, DN15
V-BR616-DN25-VE	Connecting parts for 6-way ball valve, DN25
V-BR616-DN15-VE	Connecting parts for 6-way ball valve, DN15

Actuator for 6-way ball valve

DIGICONTROL S-M106

Data sheet number 84850



Electrical drive for 6-way ball valve

Features:

- Microprocessor controlled with automatic self-calibration on start-up
- Wear-free distance measuring system - no potentiometer
- Wire break recognition in 2...10 V DC operation
- Fault recognition in continuous operation (in case of blockage by foreign bodies)
- Manual override
- Changeover from manual to automatic mode
- Rotation direction indicator

TECHNICAL DATA

Voltage	24...230 V AC, > 24 V only in dry room of VDE 0110
Outputs	0...10 V DC
Inputs	0(2)...10 V DC
Power consumption	3.5 VA
Electrical connection	Actuator with 1.5 m cable (flexible)
Actuating time	130 s/mm
Angle of rotation	90°
Torque	6 Nm
Operating mode	S4-50 % ED c/h 1200 EN60034-1
Protection class	IP43
Ambient temperature	0...50 °C

TYPE

S-M106

Thermostatic valve with dynamic thermostatic valve insert

DIGICONTROL V-VARIO-DP...

Data sheet number 85609

The V-VARIO-DP... is a dynamic, adjustable thermostatic valve with a wide setting range. With its patented capsule spring, it automatically controls the flow rate to the amount of water set at the valve, independent of pressure fluctuations in heating and cooling networks. High operational reliability through functional, simple design. The water quantity is adjusted with a key, valve insert can be replaced with mounting device without emptying the system under operating pressure.



TECHNICAL DATA

Pressure stage	PN10
Setting range	20 - 340 l/h
Mounting	Screw connection M 30 x 1.5 mm
Housing	Gunmetal, nickel-plated
Operating temperature	Max. +120 °C
Other remarks	Valve spindle with double O-ring sealing, sealing element maintenance-free, with mounting cap

TYPE LIST

TYPE	PRESSURE STAGE
V-VARIO-DP-10	PN10
V-VARIO-DP-15	PN10
V-VARIO-DP-20	PN10

POSSIBLE COMBINATIONS

VALVE TYPE	VALVE ACTUATOR			
	S-KVA-SA	S-KVA-SD	S-KVA-B24	S-KVA-B230
V-VARIO-DP-10	x	x	x	x
V-VARIO-DP-15	x	x	x	x
V-VARIO-DP-20	x	x	x	x

Druckunabhängiges Regelventil

DIGICONTROL V-VARIO-DC...

Data sheet number 85660



V-VARIO-DC is a pressure-independent control valve. It regulates the set volumetric flow independently of pressure fluctuations in the network. Setting independent of the valve lift for exact control over the entire input signal. The volume flow is infinitely adjustable via a fine adjustment wheel. Settings can be read from the outside. Connection M30 x 1.5 for drives of the S-KVA and VARIOPULSE-VP series.

TECHNICAL DATA

Medium	Water
Media temperature	-10...+120 °C
Pressure stage	PN25
Differential pressure	15 - 800 kPa
Housing	Brass casting

TYPE LIST

TYPE	NOMINAL WIDTH	PRESSURE STAGE	KVS	CONNECTION
V-VARIO-DC-S15	15	PN25	0,065 - 0,37 m ³ /h	3/4"
V-VARIO-DC-L15	15	PN25	0,22 - 1,33 m ³ /h	G 3/4"
V-VARIO-DC-XL20	20	PN25	0,3 - 1,8 m ³ /h	G 1"
V-VARIO-DC-XL25	25	PN25	0,6 - 3,6 m ³ /h	G 1 1/4"
V-VARIO-DC-XL32	32	PN25	0,55 - 4,0 m ³ /h	G 1/2"
V-VARIO-DC-L40	40	PN25	1,37 - 9,5 m ³ /h	RP 1 1/2"
V-VARIO-DC-L50	50	PN25	1,4 - 11,5 m ³ /h	RP 2"

POSSIBLE COMBINATIONS

VALVE TYPE	VALVE ACTUATOR					
	S-VARIOPULSE-VP	S-KVA-B230-6_5	S-KVA-SA-6_5	S-KVA-VA152HK	S-KVA-B24-6_5	S-KVA-SD-6_5
V-VARIO-DC-S15	x	x	x	x	x	x
V-VARIO-DC-L15	x	x	x	x	x	x
V-VARIO-DC-XL20	x	x	x	x	x	x
V-VARIO-DC-XL25	x	x	x	x	x	x

◀ CONTINUED FROM PAGE 270

POSSIBLE COMBINATIONS

VALVE TYPE	VALVE ACTUATOR					
	S-VARIOPULSE- VP	S-KVA-B230-6_5	S-KVA-SA-6_5	S-KVA- VA152HK	S-KVA-B24-6_5	S-KVA-SD-6_5
V-VARIO- DC-XL32		x	x	x	x	x
V-VARIO- DC-L40	x					
V-VARIO- DC-L50	x					

Actuator for pressure-independent control valve

DIGICONTROL S-VARIOPULSE-VP

Data sheet number 85665



S-VARIOPULSE-VP is an electromotive, microprocessor-controlled actuator with a control signal of 0 (2) - 10 V, switchable to 3-point, with position feedback, characteristic switchable from linear to equal percentage, direction of action reversible and operation switchable to manual mode.

TECHNICAL DATA

Control	0-10 V DC / 3 point
Actuating time	60 s (0-10 V) / 300 s (3 point)
Actuating force	400 N
Stroke	max. 32 mm
Protection class	IP54

TYPE

S-VARIOPULSE-VP

Electronic pressure-independent 2-way control ball valve

DIGICONTROL V-B2-IQ...

Data sheet number 85604

V-B2-IQ... is an electronic pressure-independent 2-way control ball valve with integrated ultrasonic measuring unit for exact setting and control of two different water quantities (e.g. heating/cooling) and integrated return temperature limitation. The control is pressure-independent via continuous flow rate monitoring, without minimum differential pressure via a mobile component. Integrated temperature sensors for measurement and storage of media temperature, spread and energy consumption in watt/h. Intelligent integrated flushing function by completely opening and switching off the pressure-independent control function. Control and regulation is analogue via 0-10 V, digital with BACnet or Modbus (switchable). Setting and reading of all parameters such as set point and present water quantities, flushing function, bus addressing, pending control signals, etc. via Bluetooth with Smartphone, Modbus and BACnet MS/TP. The large Bluetooth range allows setting through ceilings, grids and from outside the room. All sensors are MID certified according to the applicable standard EN 1431-4. The LEDs provide a visual indication of the status of power supply and communication. Switchable from automatic to manual (manual adjustment) via mechanical switch.

**TECHNICAL DATA**

Voltage	24 V AC/DC +/- 10 %
Medium	Water (Glykol free)
Inputs	0-10 V DC (0.17 mA)
Media temperature	+2...+100 °C
Flow characteristic	Adjustable as equal-percentage or linear
Connection	PN16 flange
Leakage rate	0.001 % of kvs
Power consumption	3 W (4 VA) in operation / 1.5 W (2 VA) standby
Housing	Polypropylene, steel
Protection class	IP54
Other remarks	Maintenance-free, no calibration necessary

TYPE LIST

TYPE	KVS
V-B2-IQ-DN65	48.8 m ³ /h
V-B2-IQ-DN80	70.7 m ³ /h
V-B2-IQ-DN100	114.4 m ³ /h
V-B2-IQ-DN150	272.2 m ³ /h

Electronic pressure-independent 3-way control ball valve

DIGICONTROL V-B3-IQ...

Data sheet number 85603



V-B3-IQ... is an electronic pressure-independent 3-way mixer ball valve with integrated ultrasonic measuring unit for exact setting and control of two different water volumes (e.g. heating/cooling) and integrated return temperature limitation. The control is pressure-independent via continuous flow rate monitoring, without minimum differential pressure via only one mobile component. Integrated temperature sensors for measurement and storage of media temperature, spread and energy consumption in watt/h. Intelligent integrated flushing function by completely opening and switching off the pressure-independent control function. Control and regulation is analogue via 0-10 V, digital with BACnet or Modbus (switchable). Setting and reading of all parameters such as set point and current water quantities, flushing function, bus addressing, pending control signals, etc. via Bluetooth with Smartphone, Modbus and BACnet MS/TP. The large Bluetooth range allows setting through ceilings, grids and from outside the room. All sensors are MID certified according to the applicable standard EN 1431-4. The LEDs provide a visual indication of the status of power supply and communication. Switchable from automatic to manual (manual adjustment) via mechanical switch.

TECHNICAL DATA

Voltage	24 V AC/DC +/- 10 %
Medium	Water (Glykol free)
Inputs	0-10 V DC (0.17 mA)
Media temperature	+2...+100 °C
Flow characteristic	Adjustable as equal-percentage or linear
Connection	DN15 - DN50: Input side - Flat sealing with ISO screw connection Output side - Internal thread ISO 7/1 (Rp) DN65 - DN150: Flange PN16
Leakage rate	0.001 % of kvs
Power consumption	3 W (4 VA) in operation / 1.5 W (2 VA) standby
Communication	Bluetooth, 0-10 V; Modbus; BACnet MS/TP
Housing	Polypropylene, steel
Protection class	IP54
Other remarks	Maintenance-free, no calibration necessary

TYPE LIST

TYPE	KVS
V-B3-IQ-DN15	3.3 m ³ /h
V-B3-IQ-DN20	5.7 m ³ /h
V-B3-IQ-DN25	8.1 m ³ /h
V-B3-IQ-DN32	10.5 m ³ /h
V-B3-IQ-DN40	19.7 m ³ /h
V-B3-IQ-DN50	25.0 m ³ /h
V-B3-IQ-DN65	48.8 m ³ /h

◀ CONTINUED FROM PAGE 274

TYPE LIST

TYPE	KVS
V-B3-IQ-DN80	70.7 m ³ /h
V-B3-IQ-DN100	114.4 m ³ /h
V-B3-IQ-DN150	272.2 m ³ /h

Two-way valves of brass with screwed connection | PN16 | up to 120 °C

DIGICONTROL V-BR216MZ-...

Data sheet number 85180



Suitable for the control of hot and chilled water (0...+120 °C) in HEVAC systems and individual room or zone control of heating plants.

TECHNICAL DATA

Pressure stage	PN16
Rangeability	≥ 30:1
Leakage rate	EN 1349 – seat-leakage V L1
Characteristic line	Equal %-mod.
Cone	Brass
Spindle	CrNi-steel 1.4305
Stem sealing	O-rings EPDM
Mounting	Body with external thread acc. ISO 228/1 union nuts and gaskets
Housing	Brass

TYPE LIST

TYPE	DIAMETER NOMINAL	KVS	STROKE
V-BR216MZ-15-0,25	DN 15	0.25 m ³ /h	6.5 mm
V-BR216MZ-15-0,4	DN 15	0.4 m ³ /h	6.5 mm
V-BR216MZ-15-0,63	DN 15	0.63 m ³ /h	6.5 mm
V-BR216MZ-15-1,0	DN 15	1.0 m ³ /h	6.5 mm
V-BR216MZ-15-1,6	DN 15	1.6 m ³ /h	6.5 mm
V-BR216MZ-15-2,5	DN 15	2.5 m ³ /h	6.5 mm
V-BR216MZ-20-4,0	DN 20	4.0 m ³ /h	6.5 mm
V-BR216MZ-25-6,3	DN 25	6.3 m ³ /h	6.5 mm
V-BR216MZ-25-8,0	DN 25	8.0 m ³ /h	6.5 mm

ACCESSORY

TYPE	DESCRIPTION
V-BR216MZ-15-G	For V-BR216MZ-15: Body with external thread, with brass union nuts and gaskets
V-BR216MZ-20-G	For V-BR216MZ-20: Body with external thread, with brass union nuts and gaskets
V-BR216MZ-25-G	For V-BR216MZ-25: Body with external thread, with brass union nuts and gaskets

POSSIBLE COMBINATIONS

VALVE TYPE	VALVE ACTUATOR			
	ΔP _{MAX} S-MC15	ΔP _{MAX} S-MC55	ΔP _{MAX} S-MC100	ΔP _{MAX} S-MC160
V-BR216MZ-15-0,25	600 kPa	-	-	-

◀ CONTINUED FROM PAGE 276

POSSIBLE COMBINATIONS

VALVE TYPE	VALVE ACTUATOR			
	ΔP_{MAX} S-MC15	ΔP_{MAX} S-MC55	ΔP_{MAX} S-MC100	ΔP_{MAX} S-MC160
V-BR216MZ-15-0,4	600 kPa	-	-	-
V-BR216MZ-15-0,63	600 kPa	-	-	-
V-BR216MZ-15-1,0	600 kPa	-	-	-
V-BR216MZ-15-1,6	300 kPa	-	-	-
V-BR216MZ-15-2,5	300 kPa	-	-	-
V-BR216MZ-20-4,0	300 kPa	-	-	-
V-BR216MZ-25-6,3	150 kPa	-	-	-
V-BR216MZ-25-8,0	150 kPa	-	-	-

Three-way valves of brass with screwed connection | PN16 | up to 120 °C

DIGICONTROL V-BR316MZ-...

Data sheet number 85182



Suitable for the control of hot and chilled water (0...+120 °C) in HEVAC systems and individual room or zone control of heating plants.

TECHNICAL DATA

Pressure stage	PN16
Rangeability	≥ 30:1
Leakage rate	EN 1349 – seat-leakage V L1
Characteristic line	<ul style="list-style-type: none"> ■ A -> AB equal percentage mod. ■ B -> AB linear
Cone	Brass
Spindle	CrNi-steel 1.4305
Stem sealing	O-rings EPDM
Mounting	Body with external thread acc. ISO 228/1 union nuts and gaskets
Housing	Brass

TYPE LIST

TYPE	DIAMETER NOMINAL	KVS	STROKE
V-BR316MZ-15-0,25	DN 15	0.25 m ³ /h	6.5 mm
V-BR316MZ-15-0,4	DN 15	0.4 m ³ /h	6.5 mm
V-BR316MZ-15-0,63	DN 15	0.63 m ³ /h	6.5 mm
V-BR316MZ-15-1,0	DN 15	1.0 m ³ /h	6.5 mm
V-BR316MZ-15-1,6	DN 15	1.6 m ³ /h	6.5 mm
V-BR316MZ-15-2,5	DN 15	2.5 m ³ /h	6.5 mm
V-BR316MZ-20-4,0	DN 20	4.0 m ³ /h	6.5 mm
V-BR316MZ-25-6,3	DN 25	6.3 m ³ /h	6.5 mm
V-BR316MZ-25-8,0	DN 25	8.0 m ³ /h	6.5 mm

ACCESSORY

TYPE	DESCRIPTION
V-BR316MZ-15-G	For V-BR316MZ-15: Body with external thread, with brass union nuts and gaskets
V-BR316MZ-20-G	For V-BR316MZ-20: Body with external thread, with brass union nuts and gaskets
V-BR316MZ-25-G	For V-BR316MZ-25: Body with external thread, with brass union nuts and gaskets

◀ CONTINUED FROM PAGE 278

POSSIBLE COMBINATIONS

VALVE TYPE	VALVE ACTUATOR			
	ΔP_{MAX} S-MC15	ΔP_{MAX} S-MC55	ΔP_{MAX} S-MC100	ΔP_{MAX} S-MC160
V-BR316MZ-15-0,25	600 kPa	-	-	-
V-BR316MZ-15-0,4	600 kPa	-	-	-
V-BR316MZ-15-0,63	600 kPa	-	-	-
V-BR316MZ-15-1,0	600 kPa	-	-	-
V-BR316MZ-15-1,6	300 kPa	-	-	-
V-BR316MZ-15-2,5	300 kPa	-	-	-
V-BR316MZ-20-4,0	300 kPa	-	-	-
V-BR316MZ-25-6,3	150 kPa	-	-	-
V-BR316MZ-25-8,0	150 kPa	-	-	-

Two-way valves of red brass with screwed connection | PN16 | up to 150 °C

DIGICONTROL V-BR216RA

Data sheet number 85133



Can be used in heating, ventilation and air-conditioning systems to control the hot and cold water flow from 0...+150 °C. The valves should only be mounted in horizontal position above 130 °C. With stem heater suitable for water with antifreeze compounds down to -15 °C. The valves are tightly closed in the end positions.

TECHNICAL DATA

Pressure stage	PN16
Rangeability	<ul style="list-style-type: none"> ■ DN 15: 50:1 ■ DN 20-50: 100:1
Leakage rate	EN 1349 – seat-leakage VI G 1 (tight sealing)
Characteristic line	A -> AB equal %
Cone	Brass CW614N
Spindle	CrMo-steel 1.4122
Stem sealing	O-rings EPDM
Mounting	Male thread as per DIN EN ISO 228-1, Class B
Housing	Red brass CC491K

TYPE LIST

TYPE	DIAMETER NOMINAL	KVS	STROKE	CONNECTION
V-BR216RA-15-0,63	DN 15	0.63 m ³ /h	12 mm	G 1"
V-BR216RA-15-1,0	DN 15	1.0 m ³ /h	12 mm	G 1"
V-BR216RA-15-1,25	DN 15	1.25 m ³ /h	12 mm	G 1"
V-BR216RA-15-1,6	DN 15	1.6 m ³ /h	12 mm	G 1"
V-BR216RA-15-2,5	DN 15	2.5 m ³ /h	12 mm	G 1"
V-BR216RA-15-4	DN 15	4.0 m ³ /h	12 mm	G 1"
V-BR216RA-20-5	DN 20	5.0 m ³ /h	12 mm	G 1 1/4"
V-BR216RA-20-6,3	DN 20	6.3 m ³ /h	12 mm	G 1 1/4"
V-BR216RA-25-8	DN 25	8.0 m ³ /h	14 mm	G 1 1/2"
V-BR216RA-25-10	DN 25	10.0 m ³ /h	14 mm	G 1 1/2"
V-BR216RA-32-12,5	DN 32	12.5 m ³ /h	14 mm	G 2"
V-BR216RA-32-16	DN 32	16.0 m ³ /h	14 mm	G 2"
V-BR216RA-40-20	DN 40	20.0 m ³ /h	14 mm	G 2 1/4"
V-BR216RA-40-25	DN 40	25.0 m ³ /h	14 mm	G 2 1/4"
V-BR216RA-50-31,5	DN 50	31.5 m ³ /h	14 mm	G 2 3/4"
V-BR216RA-50-40	DN 50	40.0 m ³ /h	14 mm	G 2 3/4"

ACCESSORY

TYPE	DESCRIPTION
V-VS-GG15-2	Fitting set cast iron DN 15 with inside thread.

◀ CONTINUED FROM PAGE 280

ACCESSORY

TYPE	DESCRIPTION
V-VS-GG20-2	Fitting set cast iron DN 20 with inside thread
V-VS-GG25-2	Fitting set cast iron DN 25 with inside thread
V-VS-GG32-2	Fitting set cast iron DN 32 with inside thread
V-VS-GG40-2	Fitting set cast iron DN 40 with inside thread
V-VS-GG50-2	Fitting set cast iron DN 50 with inside thread

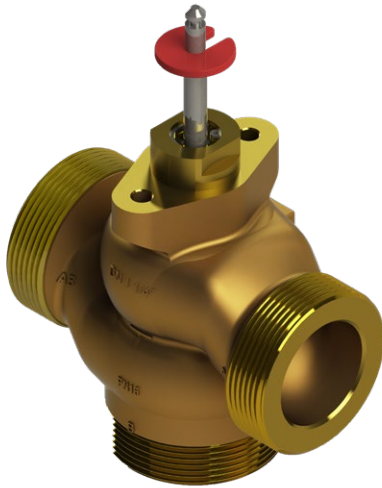
POSSIBLE COMBINATIONS

VALVE TYPE	VALVE ACTUATOR			
	ΔP_{MAX} S-MC15	ΔP_{MAX} S-MC55	ΔP_{MAX} S-MC100	ΔP_{MAX} S-MC160
V-BR216RA-15-0,63	-	1500 kPa	1600 kPa	-
V-BR216RA-15-1,0	-	1500 kPa	1600 kPa	-
V-BR216RA-15-1,25	-	1500 kPa	1600 kPa	-
V-BR216RA-15-1,6	-	1500 kPa	1600 kPa	-
V-BR216RA-15-2,5	-	1500 kPa	1600 kPa	-
V-BR216RA-15-4	-	1500 kPa	1600 kPa	-
V-BR216RA-20-5	-	1250 kPa	1600 kPa	-
V-BR216RA-20-6,3	-	1250 kPa	1600 kPa	-
V-BR216RA-25-8	-	750 kPa	1500 kPa	-
V-BR216RA-25-10	-	750 kPa	1500 kPa	-
V-BR216RA-32-12,5	-	450 kPa	900 kPa	1500 kPa
V-BR216RA-32-16	-	450 kPa	900 kPa	1500 kPa
V-BR216RA-40-20	-	250 kPa	550 kPa	950 kPa
V-BR216RA-40-25	-	250 kPa	550 kPa	950 kPa
V-BR216RA-50-31,5	-	150 kPa	350 kPa	600 kPa
V-BR216RA-50-40	-	150 kPa	350 kPa	600 kPa

Three-way valves of red brass with screwed connection | PN16 | up to 150 °C

DIGICONTROL V-BR316RA-...

Data sheet number 85133



Can be used in heating, ventilation and air-conditioning systems to control the hot and cold water flow from 0...+150 °C. The valves should only be mounted in horizontal position above 130 °C. With stem heater suitable for water with antifreeze compounds down to -15 °C. The valves are tightly closed in the end positions.

TECHNICAL DATA

Pressure stage	PN16
Rangeability	<ul style="list-style-type: none"> ■ DN 15: 50:1 ■ DN 20-50: 100:1
Leakage rate	EN 1349 – seat-leakage VI G 1 (tight sealing)
Characteristic line	<ul style="list-style-type: none"> ■ A -> AB equal percentage mod. ■ B -> AB linear
Cone	Brass CW614N
Spindle	CrMo-steel 1.4122
Stem sealing	O-rings EPDM
Mounting	Male thread as per DIN EN ISO 228-1, Class B
Housing	Red brass CC491K

TYPE LIST

TYPE	DIAMETER NOMINAL	KVS	STROKE	CONNECTION
V-BR316RA-15-0,63	DN 15	0.63 m ³ /h	12 mm	G 1"
V-BR316RA-15-1,0	DN 15	1.0 m ³ /h	12 mm	G 1"
V-BR316RA-15-1,25	DN 15	1.25 m ³ /h	12 mm	G 1"
V-BR316RA-15-1,6	DN 15	1.6 m ³ /h	12 mm	G 1"
V-BR316RA-15-2,5	DN 15	2.5 m ³ /h	12 mm	G 1"
V-BR316RA-15-4	DN 15	4.0 m ³ /h	12 mm	G 1"
V-BR316RA-20-5	DN 20	5.0 m ³ /h	12 mm	G 1 1/4"
V-BR316RA-20-6,3	DN 20	6.3 m ³ /h	12 mm	G 1 1/4"
V-BR316RA-25-8	DN 25	8.0 m ³ /h	14 mm	G 1 1/2"
V-BR316RA-25-10	DN 25	10.0 m ³ /h	14 mm	G 1 1/2"
V-BR316RA-32-12,5	DN 32	12.5 m ³ /h	14 mm	G 2"
V-BR316RA-32-16	DN 32	16.0 m ³ /h	14 mm	G 2"
V-BR316RA-40-20	DN 40	20.0 m ³ /h	14 mm	G 2 1/4"
V-BR316RA-40-25	DN 40	25.0 m ³ /h	14 mm	G 2 1/4"
V-BR316RA-50-31,5	DN 50	31.5 m ³ /h	14 mm	G 2 3/4"
V-BR316RA-50-40	DN 50	40.0 m ³ /h	14 mm	G 2 3/4"

◀ CONTINUED FROM PAGE 282

ACCESSORY

TYPE	DESCRIPTION
V-VS-GG15-3	Fitting set cast iron DN 15 with inside thread
V-VS-GG20-3	Fitting set cast iron DN 20 with inside thread
V-VS-GG25-3	Fitting set cast iron DN 25 with inside thread
V-VS-GG32-3	Fitting set cast iron DN 32 with inside thread
V-VS-GG40-3	Fitting set cast iron DN 40 with inside thread
V-VS-GG50-3	Fitting set cast iron DN 50 with inside thread

POSSIBLE COMBINATIONS

VALVE TYPE	VALVE ACTUATOR			
	ΔP_{MAX} S-MC15	ΔP_{MAX} S-MC55	ΔP_{MAX} S-MC100	ΔP_{MAX} S-MC160
V-BR316RA-15-0,63	-	1500 kPa	1600 kPa	-
V-BR316RA-15-1,0	-	1250 kPa	1500 kPa	-
V-BR316RA-15-1,25	-	1250 kPa	1600 kPa	-
V-BR316RA-15-1,6	-	1500 kPa	1600 kPa	-
V-BR316RA-15-2,5	-	1500 kPa	1600 kPa	-
V-BR316RA-15-4	-	1500 kPa	1600 kPa	-
V-BR316RA-20-5	-	1250 kPa	1600 kPa	-
V-BR316RA-20-6,3	-	1250 kPa	1600 kPa	-
V-BR316RA-25-8	-	750 kPa	1500 kPa	-
V-BR316RA-25-10	-	750 kPa	1500 kPa	-
V-BR316RA-32-12,5	-	450 kPa	900 kPa	1500 kPa
V-BR316RA-32-16	-	450 kPa	900 kPa	1500 kPa
V-BR316RA-40-20	-	250 kPa	550 kPa	950 kPa
V-BR316RA-40-25	-	250 kPa	550 kPa	950 kPa
V-BR316RA-50-31,5	-	150 kPa	350 kPa	600 kPa
V-BR316RA-50-40	-	150 kPa	350 kPa	600 kPa

Two-way valves of cast iron with flanged connection | PN6 | up to 150 °C

DIGICONTROL V-BR206GF-...

Data sheet number 85143



For use in heating, ventilation and air conditioning systems to control the flow of hot and cold water from 0...+150 °C. Actuator position from 130 °C only horizontal permissible. With stem heater suitable for water with anti-freeze compounds down to -10 °C. The valves are tightly closed in the end positions.

TECHNICAL DATA

Pressure stage	PN6
Rangeability	<ul style="list-style-type: none"> ■ DN 15: 50:1 ■ DN 20-150: 100:1
Overall length	EN 558-1 basic series 1
Leakage rate	EN 1349 – seat-leakage VI G 1 (tight sealing)
Characteristic line	A -> AB equal %
Cone	Brass CW614N
Spindle	CrMo-steel 1.4122
Stem sealing	O-rings EPDM
Mounting	Flanges acc. EN 1092-2 type 21
Housing	Cast iron EN-JL1040

TYPE LIST

TYPE	DIAMETER NOMINAL	KVS	STROKE
V-BR206GF-15-0,63	DN 15	0.63 m ³ /h	14 mm
V-BR206GF-15-1,25	DN 15	1.25 m ³ /h	14 mm
V-BR206GF-15-1,6	DN 15	1.6 m ³ /h	14 mm
V-BR206GF-15-2,5	DN 15	2.5 m ³ /h	14 mm
V-BR206GF-15-4	DN 15	4.0 m ³ /h	14 mm
V-BR206GF-20-5	DN 20	5.0 m ³ /h	14 mm
V-BR206GF-20-6,3	DN 20	6.3 m ³ /h	14 mm
V-BR206GF-25-8	DN 25	8.0 m ³ /h	14 mm
V-BR206GF-25-10	DN 25	10.0 m ³ /h	14 mm
V-BR206GF-32-12,5	DN 32	12.5 m ³ /h	14 mm
V-BR206GF-32-16	DN 32	16.0 m ³ /h	14 mm
V-BR206GF-40-20	DN 40	20.0 m ³ /h	14 mm
V-BR206GF-40-25	DN 40	25.0 m ³ /h	14 mm
V-BR206GF-50-31,5	DN 50	31.5 m ³ /h	14 mm
V-BR206GF-50-40	DN 50	40.0 m ³ /h	14 mm
V-BR206GF-65-50	DN 65	50.0 m ³ /h	20 mm
V-BR206GF-65-63	DN 65	63.0 m ³ /h	20 mm
V-BR206GF-80-80	DN 80	80.0 m ³ /h	30 mm
V-BR206GF-80-100	DN 80	100.0 m ³ /h	30 mm
V-BR206GF-100-125	DN 100	125.0 m ³ /h	30 mm

◀ CONTINUED FROM PAGE 284

TYPE LIST

TYPE	DIAMETER NOMINAL	KVS	STROKE
V-BR206GF-100-160	DN 100	160.0 m ³ /h	30 mm

POSSIBLE COMBINATIONS

VALVE TYPE	VALVE ACTUATOR					
	ΔP_{MAX} S-MC55	ΔP_{MAX} S-MC100	ΔP_{MAX} S-MC160	ΔP_{MAX} S-MC250	ΔP_{MAX} S-MC500	ΔP_{MAX} S-MC1000
V-BR206GF-15-0,63	600 kPa	600 kPa	-	-	-	-
V-BR206GF-15-1,25	600 kPa	600 kPa	-	-	-	-
V-BR206GF-15-1,6	600 kPa	600 kPa	-	-	-	-
V-BR206GF-15-2,5	600 kPa	600 kPa	-	-	-	-
V-BR206GF-15-4	600 kPa	600 kPa	-	-	-	-
V-BR206GF-20-5	600 kPa	600 kPa	-	-	-	-
V-BR206GF-20-6,3	600 kPa	600 kPa	-	-	-	-
V-BR206GF-25-8	600 kPa	600 kPa	-	-	-	-
V-BR206GF-25-10	600 kPa	600 kPa	-	-	-	-
V-BR206GF-32-12,5	450 kPa	600 kPa	600 kPa	-	-	-
V-BR206GF-32-16	450 kPa	600 kPa	600 kPa	-	-	-
V-BR206GF-40-20	250 kPa	550 kPa	600 kPa	-	-	-
V-BR206GF-40-25	250 kPa	550 kPa	600 kPa	-	-	-
V-BR206GF-50-31,5	150 kPa	350 kPa	600 kPa	-	-	-
V-BR206GF-50-40	150 kPa	350 kPa	600 kPa	-	-	-
V-BR206GF-65-50	-	150 kPa	350 kPa	600 kPa	600 kPa	-
V-BR206GF-65-63	-	150 kPa	350 kPa	600 kPa	600 kPa	-
V-BR206GF-80-80	-	-	230 kPa	350 kPa	600 kPa	-
V-BR206GF-80-100	-	-	230 kPa	350 kPa	600 kPa	-
V-BR206GF-100-125	-	-	140 kPa	250 kPa	500 kPa	-
V-BR206GF-100-160	-	-	140 kPa	250 kPa	500 kPa	-

Three-way valves of cast iron with flanged connection | PN6 | up to 150 °C

DIGICONTROL V-BR306GF-...

Data sheet number 85143



For use in heating, ventilation and air conditioning systems to control the flow of hot and cold water from 0...+150 °C. Actuator position from 130 °C only horizontal permissible. With stem heater suitable for water with anti-freeze compounds down to -10 °C. The valves are tightly closed in the end positions.

TECHNICAL DATA

Pressure stage	PN6
Rangeability	<ul style="list-style-type: none"> ■ DN 15: 50:1 ■ DN 20-150: 100:1
Overall length	EN 558-1 basic series 1
Leakage rate	EN 1349 – seat-leakage VI G 1 (tight sealing)
Characteristic line	A -> AB equal % / B -> AB linear
Cone	Brass CW614N
Spindle	CrMo-steel 1.4122
Stem sealing	O-rings EPDM
Mounting	Flanges acc. EN 1092-2 type 21
Housing	Cast iron EN-JL1040

TYPE LIST

TYPE	DIAMETER NOMINAL	KVS	STROKE
V-BR306GF-15-0,63	DN 15	0.63 m ³ /h	14 mm
V-BR306GF-15-1,25	DN 15	1.25 m ³ /h	14 mm
V-BR306GF-15-1,6	DN 15	1.6 m ³ /h	14 mm
V-BR306GF-15-2,5	DN 15	2.5 m ³ /h	14 mm
V-BR306GF-15-4	DN 15	4.0 m ³ /h	14 mm
V-BR306GF-20-5	DN 20	5.0 m ³ /h	14 mm
V-BR306GF-20-6,3	DN 20	6.3 m ³ /h	14 mm
V-BR306GF-25-8	DN 25	8.0 m ³ /h	14 mm
V-BR306GF-25-10	DN 25	10.0 m ³ /h	14 mm
V-BR306GF-32-12,5	DN 32	12.5 m ³ /h	14 mm
V-BR306GF-32-16	DN 32	16.0 m ³ /h	14 mm
V-BR306GF-40-20	DN 40	20.0 m ³ /h	14 mm
V-BR306GF-40-25	DN 40	25.0 m ³ /h	14 mm
V-BR306GF-50-31,5	DN 50	31.5 m ³ /h	14 mm
V-BR306GF-50-40	DN 50	40.0 m ³ /h	14 mm
V-BR306GF-65-50	DN 65	50.0 m ³ /h	20 mm
V-BR306GF-65-63	DN 65	63.0 m ³ /h	20 mm
V-BR306GF-80-80	DN 80	80.0 m ³ /h	30 mm
V-BR306GF-80-100	DN 80	100.0 m ³ /h	30 mm
V-BR306GF-100-125	DN 100	125.0 m ³ /h	30 mm

◀ CONTINUED FROM PAGE 286

TYPE LIST

TYPE	DIAMETER NOMINAL	KVS	STROKE
V-BR306GF-100-160	DN 100	160.0 m ³ /h	30 mm

POSSIBLE COMBINATIONS

VALVE TYPE	VALVE ACTUATOR					
	ΔP_{MAX} S-MC55	ΔP_{MAX} S-MC100	ΔP_{MAX} S-MC160	ΔP_{MAX} S-MC250	ΔP_{MAX} S-MC500	ΔP_{MAX} S-MC1000
V-BR306GF-15-0,63	600 kPa	600 kPa	-	-	-	-
V-BR306GF-15-1,25	600 kPa	600 kPa	-	-	-	-
V-BR306GF-15-1,6	600 kPa	600 kPa	-	-	-	-
V-BR306GF-15-2,5	600 kPa	600 kPa	-	-	-	-
V-BR306GF-15-4	600 kPa	600 kPa	-	-	-	-
V-BR306GF-20-5	600 kPa	600 kPa	-	-	-	-
V-BR306GF-20-6,3	600 kPa	600 kPa	-	-	-	-
V-BR306GF-25-8	600 kPa	600 kPa	-	-	-	-
V-BR306GF-25-10	600 kPa	600 kPa	-	-	-	-
V-BR306GF-32-12,5	450 kPa	600 kPa	600 kPa	-	-	-
V-BR306GF-32-16	450 kPa	600 kPa	600 kPa	-	-	-
V-BR306GF-40-20	250 kPa	550 kPa	600 kPa	-	-	-
V-BR306GF-40-25	250 kPa	550 kPa	600 kPa	-	-	-
V-BR306GF-50-31,5	150 kPa	350 kPa	600 kPa	-	-	-
V-BR306GF-50-40	150 kPa	350 kPa	600 kPa	-	-	-
V-BR306GF-65-50	-	150 kPa	350 kPa	600 kPa	600 kPa	-
V-BR306GF-65-63	-	150 kPa	350 kPa	600 kPa	600 kPa	-
V-BR306GF-80-80	-	-	230 kPa	350 kPa	600 kPa	-
V-BR306GF-80-100	-	-	230 kPa	350 kPa	600 kPa	-
V-BR306GF-100-125	-	-	140 kPa	250 kPa	500 kPa	-
V-BR306GF-100-160	-	-	140 kPa	250 kPa	500 kPa	-

Two-way valves of cast iron with flanged connection | PN16 | up to 150 °C

DIGICONTROL V-BR216GF-...

Data sheet number 85153



For use in heating, ventilation and air conditioning systems to control the flow of hot and cold water from 0...+150 °C. Actuator position from 130 °C only horizontal permissible. With stem heater suitable for water with anti-freeze compounds down to -10 °C. The valves are tightly closed in the end positions.

TECHNICAL DATA

Pressure stage	PN16
Rangeability	<ul style="list-style-type: none"> ■ DN 15: 50:1 ■ DN 20-150: 100:1
Overall length	EN 558-1 basic series 1
Leakage rate	EN 1349 – seat-leakage VI G 1 (tight sealing)
Characteristic line	A -> AB equal %
Cone	Brass CW614N
Spindle	CrMo-steel 1.4122
Stem sealing	O-rings EPDM
Mounting	Flanges acc. EN 1092-2 type 21
Housing	Cast iron EN-JL1040

TYPE LIST

TYPE	DIAMETER NOMINAL	KVS	STROKE
V-BR216GF-15-0,63	DN 15	0.63 m ³ /h	14 mm
V-BR216GF-15-1,25	DN 15	1.25 m ³ /h	14 mm
V-BR216GF-15-1,6	DN 15	1.6 m ³ /h	14 mm
V-BR216GF-15-2,5	DN 15	2.5 m ³ /h	14 mm
V-BR216GF-15-4	DN 15	4.0 m ³ /h	14 mm
V-BR216GF-20-5	DN 20	5.0 m ³ /h	14 mm
V-BR216GF-20-6,3	DN 20	6.3 m ³ /h	14 mm
V-BR216GF-25-8	DN 25	8.0 m ³ /h	14 mm
V-BR216GF-25-10	DN 25	10.0 m ³ /h	14 mm
V-BR216GF-32-12,5	DN 32	12.5 m ³ /h	14 mm
V-BR216GF-32-16	DN 32	16.0 m ³ /h	14 mm
V-BR216GF-40-20	DN 40	20.0 m ³ /h	14 mm
V-BR216GF-40-25	DN 40	25.0 m ³ /h	14 mm
V-BR216GF-50-31,5	DN 50	31.5 m ³ /h	14 mm
V-BR216GF-50-40	DN 50	40.0 m ³ /h	14 mm
V-BR216GF-65-50	DN 65	50.0 m ³ /h	20 mm
V-BR216GF-65-63	DN 65	63.0 m ³ /h	20 mm
V-BR216GF-80-80	DN 80	80.0 m ³ /h	30 mm
V-BR216GF-80-100	DN 80	100.0 m ³ /h	30 mm
V-BR216GF-100-125	DN 100	125.0 m ³ /h	30 mm

◀ CONTINUED FROM PAGE 288

TYPE LIST

TYPE	DIAMETER NOMINAL	KVS	STROKE
V-BR216GF-100-160	DN 100	160.0 m ³ /h	30 mm
V-BR216GF-125-250	DN 125	250.0 m ³ /h	50 mm
V-BR216GF-150-315	DN 150	315.0 m ³ /h	50 mm

POSSIBLE COMBINATIONS

VALVE TYPE	VALVE ACTUATOR					
	ΔP_{MAX} S-MC55	ΔP_{MAX} S-MC100	ΔP_{MAX} S-MC160	ΔP_{MAX} S-MC250	ΔP_{MAX} S-MC500	ΔP_{MAX} S-MC1000
V-BR216GF-15-0,63	1500 kPa	1600 kPa	-	-	-	-
V-BR216GF-15-1,25	1500 kPa	1600 kPa	-	-	-	-
V-BR216GF-15-1,6	1500 kPa	1600 kPa	-	-	-	-
V-BR216GF-15-2,5	1500 kPa	1600 kPa	-	-	-	-
V-BR216GF-15-4	1500 kPa	1600 kPa	-	-	-	-
V-BR216GF-20-5	1250 kPa	1600 kPa	-	-	-	-
V-BR216GF-20-6,3	1250 kPa	1600 kPa	-	-	-	-
V-BR216GF-25-8	750 kPa	1500 kPa	-	-	-	-
V-BR216GF-25-10	750 kPa	1500 kPa	-	-	-	-
V-BR216GF-32-12,5	450 kPa	900 kPa	1500 kPa	-	-	-
V-BR216GF-32-16	450 kPa	900 kPa	1500 kPa	-	-	-
V-BR216GF-40-20	250 kPa	550 kPa	950 kPa	-	-	-
V-BR216GF-40-25	250 kPa	550 kPa	950 kPa	-	-	-
V-BR216GF-50-31,5	150 kPa	350 kPa	600 kPa	-	-	-
V-BR216GF-50-40	150 kPa	350 kPa	600 kPa	-	-	-
V-BR216GF-65-50	-	150 kPa	350 kPa	600 kPa	1250 kPa	-
V-BR216GF-65-63	-	150 kPa	350 kPa	600 kPa	1250 kPa	-
V-BR216GF-80-80	-	-	230 kPa	350 kPa	850 kPa	-
V-BR216GF-80-100	-	-	230 kPa	350 kPa	850 kPa	-
V-BR216GF-100-125	-	-	140 kPa	250 kPa	500 kPa	-
V-BR216GF-100-160	-	-	140 kPa	250 kPa	500 kPa	-
V-BR216GF-125-250	-	-	-	160 kPa	370 kPa	800 kPa
V-BR216GF-150-315	-	-	-	120 kPa	270 kPa	550 kPa

Three-way valves of cast iron with flanged connection | PN16 | up to 150 °C

DIGICONTROL V-BR316GF-...

Data sheet number 85153



For use in heating, ventilation and air conditioning systems to control the flow of hot and cold water from 0...+150 °C. Actuator position from 130 °C only horizontal permissible. With stem heater suitable for water with anti-freeze compounds down to -10 °C. The valves are tightly closed in the end positions.

TECHNICAL DATA

Pressure stage	PN16
Rangeability	<ul style="list-style-type: none"> ■ DN 15: 50:1 ■ DN 20-150: 100:1
Overall length	EN 558-1 basic series 1
Leakage rate	EN 1349 – seat-leakage VI G 1 (tight sealing)
Characteristic line	A -> AB equal % / B -> AB linear
Cone	Brass CW614N
Spindle	CrMo-steel 1.4122
Stem sealing	O-rings EPDM
Mounting	Flanges acc. EN 1092-2 type 21
Housing	Cast iron EN-JL1040

TYPE LIST

TYPE	DIAMETER NOMINAL	KVS	STROKE
V-BR316GF-15-0,63	DN 15	0.63 m ³ /h	14 mm
V-BR316GF-15-1,25	DN 15	1.25 m ³ /h	14 mm
V-BR316GF-15-1,6	DN 15	1.6 m ³ /h	14 mm
V-BR316GF-15-2,5	DN 15	2.5 m ³ /h	14 mm
V-BR316GF-15-4	DN 15	4.0 m ³ /h	14 mm
V-BR316GF-20-5	DN 20	5.0 m ³ /h	14 mm
V-BR316GF-20-6,3	DN 20	6.3 m ³ /h	14 mm
V-BR316GF-25-8	DN 25	8.0 m ³ /h	14 mm
V-BR316GF-25-10	DN 25	10.0 m ³ /h	14 mm
V-BR316GF-32-12,5	DN 32	12.5 m ³ /h	14 mm
V-BR316GF-32-16	DN 32	16.0 m ³ /h	14 mm
V-BR316GF-40-20	DN 40	20.0 m ³ /h	14 mm
V-BR316GF-40-25	DN 40	25.0 m ³ /h	14 mm
V-BR316GF-50-31,5	DN 50	31.5 m ³ /h	14 mm
V-BR316GF-50-40	DN 50	40.0 m ³ /h	14 mm
V-BR316GF-65-50	DN 65	50.0 m ³ /h	20 mm
V-BR316GF-65-63	DN 65	63.0 m ³ /h	20 mm
V-BR316GF-80-80	DN 80	80.0 m ³ /h	30 mm
V-BR316GF-80-100	DN 80	100.0 m ³ /h	30 mm
V-BR316GF-100-125	DN 100	125.0 m ³ /h	30 mm

◀ CONTINUED FROM PAGE 290

TYPE LIST

TYPE	DIAMETER NOMINAL	KVS	STROKE
V-BR316GF-100-160	DN 100	160.0 m ³ /h	30 mm
V-BR316GF-125-250	DN 125	250.0 m ³ /h	50 mm
V-BR316GF-150-315	DN 150	315.0 m ³ /h	50 mm

POSSIBLE COMBINATIONS

VALVE TYPE	VALVE ACTUATOR					
	Δ PMAX S-MC55	Δ PMAX S-MC100	Δ PMAX S-MC160	Δ PMAX S-MC250	Δ PMAX S-MC500	Δ PMAX S-MC1000
V-BR316GF-15-0,63	1500 kPa	1600 kPa	-	-	-	-
V-BR316GF-15-1,25	1500 kPa	1600 kPa	-	-	-	-
V-BR316GF-15-1,6	1250 kPa	1600 kPa	-	-	-	-
V-BR316GF-15-2,5	1500 kPa	1600 kPa	-	-	-	-
V-BR316GF-15-4	1500 kPa	1600 kPa	-	-	-	-
V-BR316GF-20-5	1250 kPa	1600 kPa	-	-	-	-
V-BR316GF-20-6,3	1250 kPa	1600 kPa	-	-	-	-
V-BR316GF-25-8	750 kPa	1500 kPa	-	-	-	-
V-BR316GF-25-10	750 kPa	1500 kPa	-	-	-	-
V-BR316GF-32-12,5	450 kPa	900 kPa	1500 kPa	-	-	-
V-BR316GF-32-16	450 kPa	900 kPa	1500 kPa	-	-	-
V-BR316GF-40-20	250 kPa	550 kPa	950 kPa	-	-	-
V-BR316GF-40-25	250 kPa	550 kPa	950 kPa	-	-	-
V-BR316GF-50-31,5	150 kPa	350 kPa	600 kPa	-	-	-
V-BR316GF-50-40	150 kPa	350 kPa	600 kPa	-	-	-
V-BR316GF-65-50	-	150 kPa	350 kPa	600 kPa	1250 kPa	-
V-BR316GF-65-63	-	150 kPa	350 kPa	600 kPa	1250 kPa	-
V-BR316GF-80-80	-	-	230 kPa	350 kPa	850 kPa	-
V-BR316GF-80-100	-	-	230 kPa	350 kPa	850 kPa	-
V-BR316GF-100-125	-	-	140 kPa	250 kPa	500 kPa	-
V-BR316GF-100-160	-	-	140 kPa	250 kPa	500 kPa	-
V-BR316GF-125-250	-	-	-	160 kPa	370 kPa	800 kPa
V-BR316GF-150-315	-	-	-	120 kPa	270 kPa	550 kPa

Two-way valves of cast iron with flanged connection | PN16 | up to 350 °C

DIGICONTROL V-BR216-...

Data sheet number 85162



Suitable in building and process engineering for various media 0...+200 °C. Suitable with stuffing box extension or stem seal with stainless steel bellow from -10...+350 °C and for austenitic cast steel from -30...+350 °C. Suitable with stem heater for water with antifreeze compounds down to -10 °C and for austenitic cast steel down to -30 °C.

TECHNICAL DATA

Pressure stage	PN16
Rangeability	≥ 50:1
Overall length	EN 558-1 basic series 1
Leakage rate	EN 1349 - seat-leakage IV L1 (≤ 0.01 % of kvs-value)
Characteristic line	Perforated plug: equal %, Option: linear
Cone	CrNi-steel 1.4057
Spindle	CrMo-steel 1.4122
Stem sealing	O-rings EPDM, FKM, Fluoraz or PTFE lip seals or pure graphite packing depending on medium and operating temperature
Mounting	Flanges acc. EN 1092-2 type 21
Housing	Cast iron EN-JL1040

TYPE LIST

TYPE	DIAMETER NOMINAL	KVS	SPECIAL KVS VALUE	STROKE
V-BR216-125-125,0	DN 125	125.0 m ³ /h	•	60 mm
V-BR216-125-160,0	DN 125	160.0 m ³ /h		60 mm
V-BR216-125-200,0	DN 125	200.0 m ³ /h	•	60 mm
V-BR216-125-250,0	DN 125	250.0 m ³ /h		60 mm
V-BR216-150-200,0	DN 150	200.0 m ³ /h	•	60 mm
V-BR216-150-250,0	DN 150	250.0 m ³ /h		60 mm
V-BR216-150-315,0	DN 150	315.0 m ³ /h	•	60 mm
V-BR216-150-400,0	DN 150	400.0 m ³ /h		60 mm

POSSIBLE COMBINATIONS

VALVE TYPE	VALVE ACTUATOR					
	ΔP _{MAX} S-MC103	ΔP _{MAX} S-MC163	ΔP _{MAX} S-MC253	ΔP _{MAX} S-MC503	ΔP _{MAX} S-MC1003	ΔP _{MAX} S-MC1503
V-BR216-125-125,0	-	-	-	290 kPa	500 kPa	950 kPa
V-BR216-125-160,0	-	-	-	290 kPa	500 kPa	950 kPa
V-BR216-125-200,0	-	-	-	290 kPa	500 kPa	950 kPa

◀ CONTINUED FROM PAGE 292

POSSIBLE COMBINATIONS

VALVE TYPE	VALVE ACTUATOR					
	ΔP_{MAX} S-MC103	ΔP_{MAX} S-MC163	ΔP_{MAX} S-MC253	ΔP_{MAX} S-MC503	ΔP_{MAX} S-MC1003	ΔP_{MAX} S-MC1503
V-BR216- 125-250,0	-	-	-	290 kPa	500 kPa	950 kPa
V-BR216- 150-200,0	-	-	-	190 kPa	350 kPa	700 kPa
V-BR216- 150-250,0	-	-	-	190 kPa	350 kPa	700 kPa
V-BR216- 150-315,0	-	-	-	190 kPa	350 kPa	700 kPa
V-BR216- 150-400,0	-	-	-	190 kPa	350 kPa	700 kPa

Three-way valves of cast iron with flanged connection | PN16 | up to 350 °C

DIGICONTROL V-BR316-...

Data sheet number 85162



Suitable in building and process engineering for various media 0...+200 °C. Suitable with stuffing box extension or stem seal with stainless steel bellow from -10...+350 °C and for austenitic cast steel from -30...+350 °C. Suitable with stem heater for water with antifreeze compounds down to -10 °C and for austenitic cast steel down to -30 °C.

TECHNICAL DATA

Pressure stage	PN16
Rangeability	≥ 50:1
Overall length	EN 558-1 basic series 1
Leakage rate	EN 1349 – seat-leakage VI G 1 (≤ 0,01 % of kvs-value)
Characteristic line	≥ DN 50: A->AB equal % mod. (Option: linear), B->AB linear
Cone	CrNi-steel 1.4057
Spindle	CrMo-steel 1.4122
Stem sealing	O-rings EPDM, FKM, Fluoraz or PTFE lip seals or pure graphite packing depending on medium and operating temperature
Mounting	Flanges acc. EN 1092-2 type 21
Housing	Cast iron EN-JL1040

TYPE LIST

TYPE	DIAMETER NOMINAL	KVS	SPECIAL KVS VALUE	STROKE
V-BR316-125-125,0	DN 125	125.0 m ³ /h	•	60 mm
V-BR316-125-160,0	DN 125	160.0 m ³ /h	•	60 mm
V-BR316-125-200,0	DN 125	200.0 m ³ /h		60 mm
V-BR316-125-250,0	DN 125	250.0 m ³ /h		60 mm
V-BR316-150-200,0	DN 150	200.0 m ³ /h	•	60 mm
V-BR316-150-250,0	DN 150	250.0 m ³ /h	•	60 mm
V-BR316-150-315,0	DN 150	315.0 m ³ /h		60 mm
V-BR316-150-400,0	DN 150	400.0 m ³ /h		60 mm

◀ CONTINUED FROM PAGE 294

POSSIBLE COMBINATIONS

VALVE TYPE	VALVE ACTUATOR					
	ΔP_{MAX} S-MC103	ΔP_{MAX} S-MC163	ΔP_{MAX} S-MC253	ΔP_{MAX} S-MC503	ΔP_{MAX} S-MC1003	ΔP_{MAX} S-MC1503
V-BR316- 125-125,0	-	-	-	290 kPa	500 kPa	950 kPa
V-BR316- 125-160,0	-	-	-	290 kPa	500 kPa	950 kPa
V-BR316- 125-200,0	-	-	-	290 kPa	500 kPa	950 kPa
V-BR316- 125-250,0	-	-	-	290 kPa	500 kPa	950 kPa
V-BR316- 150-200,0	-	-	-	190 kPa	350 kPa	700 kPa
V-BR316- 150-250,0	-	-	-	190 kPa	350 kPa	700 kPa
V-BR316- 150-315,0	-	-	-	190 kPa	350 kPa	700 kPa
V-BR316- 150-400,0	-	-	-	190 kPa	350 kPa	700 kPa

Two-way valves of spheroidal graphite with flanged connection | PN25 | up to 350 °C

DIGICONTROL V-BR225-...

Data sheet number 85162



Suitable in building and process engineering for various media 0...+200 °C. Suitable with stuffing box extension or stem seal with stainless steel bellow from -10...+350 °C and for austenitic cast steel from -30...+350 °C. Suitable with stem heater for water with antifreeze compounds down to -10 °C and for austenitic cast steel down to -30 °C.

TECHNICAL DATA

Pressure stage	PN25
Rangeability	≥ 50:1
Overall length	EN 558-1 basic series 1
Leakage rate	EN 1349 – seat-leakage VI G 1 (≤ 0,01 % of kvs-value)
Characteristic line	≤ DN 50: equal %, Option: linear
Cone	CrNi-steel 1.4057
Spindle	CrMo-steel 1.4122
Stem sealing	O-rings EPDM, FKM, Fluoraz or PTFE lip seals or pure graphite packing depending on medium and operating temperature
Mounting	Flanges acc. EN 1092-2 type 21
Housing	Spheroidal graphite EN-JS1024

TYPE LIST

TYPE	DIAMETER NOMINAL	KVS	SPECIAL KVS VALUE	STROKE
V-BR225-15-0,16	DN 15	0.16 m ³ /h		20 mm
V-BR225-15-0,25	DN 15	0.25 m ³ /h		20 mm
V-BR225-15-0,40	DN 15	0.4 m ³ /h		20 mm
V-BR225-15-0,63	DN 15	0.63 m ³ /h		20 mm
V-BR225-15-1,0	DN 15	1.0 m ³ /h		20 mm
V-BR225-15-1,25	DN 15	1.25 m ³ /h		20 mm
V-BR225-15-1,60	DN 15	1.6 m ³ /h		20 mm
V-BR225-15-2,50	DN 15	2.5 m ³ /h		20 mm
V-BR225-15-4,0	DN 15	4.0 m ³ /h		20 mm
V-BR225-20-2,5	DN 20	2.5 m ³ /h	•	20 mm
V-BR225-20-4,0	DN 20	4.0 m ³ /h		20 mm
V-BR225-20-5,0	DN 20	5.0 m ³ /h	•	20 mm
V-BR225-20-6,3	DN 20	6.3 m ³ /h		20 mm
V-BR225-25-5,0	DN 25	5.0 m ³ /h	•	20 mm
V-BR225-25-6,3	DN 25	6.3 m ³ /h		20 mm
V-BR225-25-8,0	DN 25	8.0 m ³ /h	•	20 mm
V-BR225-25-10,0	DN 25	10.0 m ³ /h		20 mm
V-BR225-32-8,0	DN 32	8.0 m ³ /h	•	20 mm
V-BR225-32-10,0	DN 32	10.0 m ³ /h		20 mm

◀ CONTINUED FROM PAGE 296

TYPE LIST

TYPE	DIAMETER NOMINAL	KVS	SPECIAL KVS VALUE	STROKE
V-BR225-32-12,5	DN 32	12.5 m ³ /h	•	20 mm
V-BR225-32-16,0	DN 32	16.0 m ³ /h		20 mm
V-BR225-40-12,5	DN 40	12.5 m ³ /h	•	20 mm
V-BR225-40-16,0	DN 40	16.0 m ³ /h		20 mm
V-BR225-40-20,0	DN 40	20.0 m ³ /h	•	20 mm
V-BR225-40-25,0	DN 40	25.0 m ³ /h		20 mm
V-BR225-50-20,0	DN 50	20.0 m ³ /h	•	30 mm
V-BR225-50-25,0	DN 50	25.0 m ³ /h		30 mm
V-BR225-50-31,5	DN 50	31.5 m ³ /h	•	30 mm
V-BR225-50-40,0	DN 50	40.0 m ³ /h		30 mm
V-BR225-65-31,5	DN 65	31.5 m ³ /h	•	30 mm
V-BR225-65-40,0	DN 65	40.0 m ³ /h		30 mm
V-BR225-65-50,0	DN 65	50.0 m ³ /h	•	30 mm
V-BR225-65-63,0	DN 65	63.0 m ³ /h		30 mm
V-BR225-80-50,0	DN 80	50.0 m ³ /h	•	50 mm
V-BR225-80-63,0	DN 80	63.0 m ³ /h		50 mm
V-BR225-80-80,0	DN 80	80.0 m ³ /h	•	50 mm
V-BR225-80-100,0	DN 80	100.0 m ³ /h		50 mm
V-BR225-100-80,0	DN 100	80,0 m ³ /h	•	50 mm
V-BR225-100-100,0	DN 100	100.0 m ³ /h		50 mm
V-BR225-100-125,0	DN 100	125.0 m ³ /h	•	50 mm
V-BR225-100-160,0	DN 100	160.0 m ³ /h		50 mm
V-BR225-125-125,0	DN 125	125.0 m ³ /h	•	60 mm
V-BR225-125-160,0	DN 125	160.0 m ³ /h		60 mm
V-BR225-125-200,0	DN 125	200.0 m ³ /h	•	60 mm
V-BR225-125-250,0	DN 125	250.0 m ³ /h		60 mm
V-BR225-150-200,0	DN 150	200.0 m ³ /h	•	60 mm
V-BR225-150-250,0	DN 150	250.0 m ³ /h		60 mm
V-BR225-150-315,0	DN 150	315.0 m ³ /h	•	60 mm
V-BR225-150-400,0	DN 150	400.0 m ³ /h		60 mm

CONTINUED ON PAGE 298 ▶

◀ CONTINUED FROM PAGE 297

POSSIBLE COMBINATIONS

VALVE TYPE	VALVE ACTUATOR							
	ΔP_{MAX} S-MC103	ΔP_{MAX} S-MC103SE	ΔP_{MAX} S-MC163	ΔP_{MAX} S-MC253	ΔP_{MAX} S-MC253SE	ΔP_{MAX} S-MC503	ΔP_{MAX} S-MC1003	ΔP_{MAX} S-MC1503
V-BR225-15-0,16	3500 kPa	3500 kPa	4000 kPa	4000 kPa	4000 kPa	4000 kPa	-	-
V-BR225-15-0,25	3500 kPa	3500 kPa	4000 kPa	4000 kPa	4000 kPa	4000 kPa	-	-
V-BR225-15-0,40	3500 kPa	3500 kPa	4000 kPa	4000 kPa	4000 kPa	4000 kPa	-	-
V-BR225-15-0,63	3500 kPa	3500 kPa	4000 kPa	4000 kPa	4000 kPa	4000 kPa	-	-
V-BR225-15-1,0	3500 kPa	3500 kPa	4000 kPa	4000 kPa	4000 kPa	4000 kPa	-	-
V-BR225-15-1,25	3500 kPa	3500 kPa	4000 kPa	4000 kPa	4000 kPa	4000 kPa	-	-
V-BR225-15-1,60	3500 kPa	3500 kPa	4000 kPa	4000 kPa	4000 kPa	4000 kPa	-	-
V-BR225-15-2,50	3500 kPa	3500 kPa	4000 kPa	4000 kPa	4000 kPa	4000 kPa	-	-
V-BR225-15-4,0	1250 kPa	1250 kPa	2400 kPa	4000 kPa	4000 kPa	4000 kPa	-	-
V-BR225-20-2,5	1250 kPa	1250 kPa	2400 kPa	4000 kPa	4000 kPa	4000 kPa	-	-
V-BR225-20-4,0	1250 kPa	1250 kPa	2400 kPa	4000 kPa	4000 kPa	4000 kPa	-	-
V-BR225-20-5,0	1250 kPa	1250 kPa	2400 kPa	4000 kPa	4000 kPa	4000 kPa	-	-
V-BR225-20-6,3	1250 kPa	1250 kPa	2400 kPa	4000 kPa	4000 kPa	4000 kPa	-	-
V-BR225-25-5,0	1050 kPa	1050 kPa	2050 kPa	3500 kPa	3700 kPa	4000 kPa	-	-
V-BR225-25-6,3	1050 kPa	1050 kPa	2050 kPa	3500 kPa	3700 kPa	4000 kPa	-	-
V-BR225-25-8,0	1050 kPa	1050 kPa	2050 kPa	3500 kPa	3700 kPa	4000 kPa	-	-
V-BR225-25-10,0	1050 kPa	1050 kPa	2050 kPa	3500 kPa	3700 kPa	4000 kPa	-	-
V-BR225-32-8,0	600 kPa	600 kPa	1250 kPa	2200 kPa	2300 kPa	4000 kPa	-	-
V-BR225-32-10,0	600 kPa	600 kPa	1250 kPa	2200 kPa	2300 kPa	4000 kPa	-	-
V-BR225-32-12,5	600 kPa	600 kPa	1250 kPa	2200 kPa	2300 kPa	3150 kPa	-	-

◀ CONTINUED FROM PAGE 298

POSSIBLE COMBINATIONS

VALVE TYPE	VALVE ACTUATOR							
	ΔP_{MAX} S-MC103	ΔP_{MAX} S-MC103SE	ΔP_{MAX} S-MC163	ΔP_{MAX} S-MC253	ΔP_{MAX} S-MC253SE	ΔP_{MAX} S-MC503	ΔP_{MAX} S-MC1003	ΔP_{MAX} S-MC1503
V-BR225-32-16,0	600 kPa	600 kPa	1250 kPa	2200 kPa	2300 kPa	4000 kPa	-	-
V-BR225-40-12,5	350 kPa	350 kPa	750 kPa	1400 kPa	1500 kPa	3150 kPa	-	-
V-BR225-40-16,0	350 kPa	350 kPa	750 kPa	1400 kPa	1500 kPa	3150 kPa	-	-
V-BR225-40-20,0	350 kPa	350 kPa	750 kPa	1400 kPa	1500 kPa	3150 kPa	-	-
V-BR225-40-25,0	350 kPa	350 kPa	750 kPa	1400 kPa	1500 kPa	3150 kPa	-	-
V-BR225-50-20,0	-	-	450 kPa	850 kPa	900 kPa	1950 kPa	-	-
V-BR225-50-25,0	-	-	450 kPa	850 kPa	900 kPa	1950 kPa	-	-
V-BR225-50-31,5	-	-	450 kPa	850 kPa	900 kPa	1950 kPa	-	-
V-BR225-50-40,0	-	-	450 kPa	850 kPa	900 kPa	1950 kPa	-	-
V-BR225-65-31,5	-	-	300 kPa	540 kPa	560 kPa	1250 kPa	2150 kPa	-
V-BR225-65-40,0	-	-	300 kPa	540 kPa	560 kPa	1250 kPa	2150 kPa	4000 kPa
V-BR225-65-50,0	-	-	300 kPa	540 kPa	560 kPa	1250 kPa	2150 kPa	-
V-BR225-65-63,0	-	-	300 kPa	540 kPa	560 kPa	1250 kPa	2150 kPa	4000 kPa
V-BR225-80-50,0	-	-	-	350 kPa	350 kPa	850 kPa	1500 kPa	-
V-BR225-80-63,0	-	-	-	350 kPa	350 kPa	850 kPa	1500 kPa	2800 kPa
V-BR225-80-80,0	-	-	-	350 kPa	350 kPa	850 kPa	1500 kPa	-
V-BR225-80-100,0	-	-	-	350 kPa	350 kPa	850 kPa	1500 kPa	2800 kPa
V-BR225-100-80,0	-	-	-	200 kPa	200 kPa	500 kPa	950 kPa	-
V-BR225-100-100,0	-	-	-	200 kPa	200 kPa	500 kPa	950 kPa	1700 kPa
V-BR225-100-125,0	-	-	-	200 kPa	200 kPa	500 kPa	950 kPa	-

CONTINUED ON PAGE 300 ▶

◀ CONTINUED FROM PAGE 299

POSSIBLE COMBINATIONS

VALVE
TYPE

VALVE ACTUATOR

	ΔP_{MAX} S-MC103	ΔP_{MAX} S-MC103SE	ΔP_{MAX} S-MC163	ΔP_{MAX} S-MC253	ΔP_{MAX} S-MC253SE	ΔP_{MAX} S-MC503	ΔP_{MAX} S-MC1003	ΔP_{MAX} S-MC1503
V-BR225-100-160,0	-	-	-	200 kPa	200 kPa	500 kPa	950 kPa	1700 kPa
V-BR225-125-125,0	-	-	-	-	-	290 kPa	500 kPa	950 kPa
V-BR225-125-160,0	-	-	-	-	-	290 kPa	500 kPa	950 kPa
V-BR225-125-200,0	-	-	-	-	-	290 kPa	500 kPa	950 kPa
V-BR225-125-250,0	-	-	-	-	-	290 kPa	500 kPa	950 kPa
V-BR225-150-200,0	-	-	-	-	-	190 kPa	350 kPa	700 kPa
V-BR225-150-250,0	-	-	-	-	-	190 kPa	350 kPa	700 kPa
V-BR225-150-315,0	-	-	-	-	-	190 kPa	350 kPa	700 kPa
V-BR225-150-400,0	-	-	-	-	-	190 kPa	350 kPa	700 kPa

Three-way valves of spheroidal graphite with flanged connection | PN25 | up to 350 °C

DIGICONTROL V-BR325-...

Data sheet number 85162

Suitable in building and process engineering for various media 0...+200 °C. Suitable with stuffing box extension or stem seal with stainless steel bellow from -10...+350 °C and for austenitic cast steel from -30...+350 °C. Suitable with stem heater for water with antifreeze compounds down to -10 °C and for austenitic cast steel down to -30 °C.

TECHNICAL DATA

Pressure stage	PN25
Rangeability	≥ 50:1
Overall length	EN 558-1 basic series 1
Leakage rate	EN 1349 – seat-leakage VI G 1 (≤ 0,01 % of kvs-value)
Characteristic line	<ul style="list-style-type: none"> ■ ≤ DN 40: A->AB equal % (Option: linear), B->AB linear ■ ≥ DN 50: A->AB equal % mod. (Option: linear), B->AB linear
Cone	CrNi-steel 1.4057
Spindle	CrMo-steel 1.4122
Stem sealing	O-rings EPDM, FKM, Fluoraz or PTFE lip seals or pure graphite packing depending on medium and operating temperature
Mounting	Flanges acc. EN 1092-2 type 21
Housing	Spheroidal graphite EN-JS1024

**TYPE LIST**

TYPE	DIAMETER NOMINAL	KVS	SPECIAL KVS VALUE	STROKE
V-BR325-15-2,5	DN 15	2.5 m ³ /h		20 mm
V-BR325-15-4,0	DN 15	4.0 m ³ /h		20 mm
V-BR325-20-2,5	DN 20	2.5 m ³ /h	•	20 mm
V-BR325-20-4,0	DN 20	4.0 m ³ /h	•	20 mm
V-BR325-20-5,0	DN 20	5.0 m ³ /h		20 mm
V-BR325-20-6,3	DN 20	6.3 m ³ /h		20 mm
V-BR325-25-5,0	DN 25	5.0 m ³ /h	•	20 mm
V-BR325-25-6,3	DN 25	6.3 m ³ /h	•	20 mm
V-BR325-25-8,0	DN 25	8.0 m ³ /h		20 mm
V-BR325-25-10,0	DN 25	10.0 m ³ /h		20 mm
V-BR325-32-8,0	DN 32	8.0 m ³ /h	•	20 mm
V-BR325-32-10,0	DN 32	10.0 m ³ /h	•	20 mm
V-BR325-32-12,5	DN 32	12.5 m ³ /h		20 mm
V-BR325-32-16,0	DN 32	16.0 m ³ /h		20 mm
V-BR325-40-12,5	DN 40	12.5 m ³ /h	•	20 mm
V-BR325-40-16,0	DN 40	16.0 m ³ /h	•	20 mm

5.2 Fittings and drives

◀ CONTINUED FROM PAGE 301

TYPE LIST

TYPE	DIAMETER NOMINAL	KVS	SPECIAL KVS VALUE	STROKE
V-BR325-40-20,0	DN 40	20.0 m ³ /h		20 mm
V-BR325-40-25,0	DN 40	25.0 m ³ /h		20 mm
V-BR325-50-20,0	DN 50	20.0 m ³ /h	•	30 mm
V-BR325-50-25,0	DN 50	25.0 m ³ /h	•	30 mm
V-BR325-50-31,5	DN 50	31.5 m ³ /h		30 mm
V-BR325-50-40,0	DN 50	40.0 m ³ /h		30 mm
V-BR325-65-31,5	DN 65	31.5 m ³ /h	•	30 mm
V-BR325-65-40,0	DN 65	40.0 m ³ /h	•	30 mm
V-BR325-65-50,0	DN 65	50.0 m ³ /h		30 mm
V-BR325-65-63,0	DN 65	63.0 m ³ /h		30 mm
V-BR325-80-50,0	DN 80	50.0 m ³ /h	•	50 mm
V-BR325-80-63,0	DN 80	63.0 m ³ /h	•	50 mm
V-BR325-80-80,0	DN 80	80.0 m ³ /h		50 mm
V-BR325-80-100,0	DN 80	100.0 m ³ /h		50 mm
V-BR325-100-80,0	DN 100	80.0 m ³ /h	•	50 mm
V-BR325-100-100,0	DN 100	100.0 m ³ /h	•	50 mm
V-BR325-100-125,0	DN 100	125.0 m ³ /h		50 mm
V-BR325-100-160,0	DN 100	160.0 m ³ /h		50 mm
V-BR325-125-125,0	DN 125	125.0 m ³ /h	•	60 mm
V-BR325-125-160,0	DN 125	160.0 m ³ /h	•	60 mm
V-BR325-125-200,0	DN 125	200.0 m ³ /h	•	60 mm
V-BR325-125-250,0	DN 125	250.0 m ³ /h	•	60 mm
V-BR325-150-200,0	DN 150	200.0 m ³ /h		60 mm
V-BR325-150-250,0	DN 150	250.0 m ³ /h		60 mm
V-BR325-150-315,0	DN 150	315.0 m ³ /h		60 mm
V-BR325-150-400,0	DN 150	400.0 m ³ /h		60 mm

POSSIBLE COMBINATIONS

VALVE TYPE	VALVE ACTUATOR					
	ΔP _{MAX} S-MC103	ΔP _{MAX} S-MC163	ΔP _{MAX} S-MC253	ΔP _{MAX} S-MC503	ΔP _{MAX} S-MC1003	ΔP _{MAX} S-MC1503
V-BR325- 15-2,5	1250 kPa	2400 kPa	4000 kPa	4000 kPa	-	-

◀ CONTINUED FROM PAGE 302

POSSIBLE COMBINATIONS

VALVE TYPE	VALVE ACTUATOR					
	ΔP_{MAX} S-MC103	ΔP_{MAX} S-MC163	ΔP_{MAX} S-MC253	ΔP_{MAX} S-MC503	ΔP_{MAX} S-MC1003	ΔP_{MAX} S-MC1503
V-BR325-15-4,0	1250 kPa	2400 kPa	4000 kPa	4000 kPa	-	-
V-BR325-20-2,5	1250 kPa	2400 kPa	4000 kPa	4000 kPa	-	-
V-BR325-20-4,0	1250 kPa	2400 kPa	4000 kPa	4000 kPa	-	-
V-BR325-20-5,0	1250 kPa	2400 kPa	4000 kPa	4000 kPa	-	-
V-BR325-20-6,3	1250 kPa	2400 kPa	4000 kPa	4000 kPa	-	-
V-BR325-25-5,0	1050 kPa	2050 kPa	3500 kPa	4000 kPa	-	-
V-BR325-25-6,3	1050 kPa	2050 kPa	3500 kPa	4000 kPa	-	-
V-BR325-25-8,0	1050 kPa	2050 kPa	3500 kPa	4000 kPa	-	-
V-BR325-25-10,0	1050 kPa	2050 kPa	3500 kPa	4000 kPa	-	-
V-BR325-32-8,0	600 kPa	1250 kPa	2200 kPa	4000 kPa	-	-
V-BR325-32-10,0	600 kPa	1250 kPa	2200 kPa	4000 kPa	-	-
V-BR325-32-12,5	600 kPa	1250 kPa	2200 kPa	4000 kPa	-	-
V-BR325-32-16,0	600 kPa	1250 kPa	2200 kPa	4000 kPa	-	-
V-BR325-40-12,5	350 kPa	750 kPa	1400 kPa	3150 kPa	-	-
V-BR325-40-16,0	350 kPa	750 kPa	1400 kPa	3150 kPa	-	-
V-BR325-40-20,0	350 kPa	750 kPa	1400 kPa	3150 kPa	-	-
V-BR325-40-25,0	350 kPa	750 kPa	1400 kPa	3150 kPa	-	-
V-BR325-50-20,0	-	450 kPa	850 kPa	1950 kPa	-	-
V-BR325-50-25,0	-	450 kPa	850 kPa	1950 kPa	-	-
V-BR325-50-31,5	-	450 kPa	850 kPa	1950 kPa	-	-

CONTINUED ON PAGE 304 ▶

POSSIBLE COMBINATIONS

VALVE TYPE	VALVE ACTUATOR					
	ΔP_{MAX} S-MC103	ΔP_{MAX} S-MC163	ΔP_{MAX} S-MC253	ΔP_{MAX} S-MC503	ΔP_{MAX} S-MC1003	ΔP_{MAX} S-MC1503
V-BR325- 50-40,0	-	450 kPa	850 kPa	1950 kPa	-	-
V-BR325- 65-31,5	-	300 kPa	540 kPa	1250 kPa	2150 kPa	-
V-BR325- 65-40,0	-	300 kPa	540 kPa	1250 kPa	2150 kPa	-
V-BR325- 65-50,0	-	300 kPa	540 kPa	1250 kPa	2150 kPa	4000 kPa
V-BR325- 65-63,0	-	300 kPa	540 kPa	1250 kPa	2150 kPa	4000 kPa
V-BR325- 80-50,0	-	-	350 kPa	850 kPa	1500 kPa	-
V-BR325- 80-63,0	-	-	350 kPa	850 kPa	1500 kPa	-
V-BR325- 80-80,0	-	-	350 kPa	850 kPa	1500 kPa	2800 kPa
V-BR325- 80-100,0	-	-	350 kPa	850 kPa	1500 kPa	2800 kPa
V-BR325- 100-80,0	-	-	200 kPa	500 kPa	950 kPa	-
V-BR325- 100-100,0	-	-	200 kPa	500 kPa	950 kPa	-
V-BR325- 100-125,0	-	-	200 kPa	500 kPa	950 kPa	1700 kPa
V-BR325- 100-160,0	-	-	200 kPa	500 kPa	950 kPa	1700 kPa
V-BR325- 125-125,0	-	-	-	290 kPa	500 kPa	950 kPa
V-BR325- 125-160,0	-	-	-	290 kPa	500 kPa	950 kPa
V-BR325- 125-200,0	-	-	-	290 kPa	500 kPa	950 kPa
V-BR325- 125-250,0	-	-	-	290 kPa	500 kPa	950 kPa
V-BR325- 150-200,0	-	-	-	190 kPa	350 kPa	700 kPa
V-BR325- 150-250,0	-	-	-	190 kPa	350 kPa	700 kPa
V-BR325- 150-315,0	-	-	-	190 kPa	350 kPa	700 kPa
V-BR325- 150-400,0	-	-	-	190 kPa	350 kPa	700 kPa

Two-way valves of cast steel with flanged connection | PN40 | up to 350 °C

DIGICONTROL V-BR240S-...

Data sheet number 85162



Suitable in building and process engineering for various media 0...+200 °C. Suitable with stuffing box extension or stem seal with stainless steel bellow from -10...+350 °C and for austenitic cast steel from -30...+350 °C. Suitable with stem heater for water with antifreeze compounds down to -10 °C and for austenitic cast steel down to -30 °C.

TECHNICAL DATA

Pressure stage	PN40
Rangeability	≥ 50:1
Overall length	EN 558-1 basic series 1
Leakage rate	EN 1349 – seat-leakage VI G 1 (≤ 0,01 % of kvs-value)
Characteristic line	<ul style="list-style-type: none"> ■ ≤ DN 50: equal %, Option: linear ■ ≥ DN 65: equal % mod., Option: linear ■ Perforated plug: equal %, Option: linear
Cone	CrNi-steel 1.4057
Spindle	CrMo-steel 1.4122
Stem sealing	O-rings EPDM, FKM, Fluoraz or PTFE lip seals or pure graphite packing depending on medium and operating temperature
Mounting	Flanges acc. EN 1092-2 type 21
Housing	Cast steel 1.0619+N

TYPE LIST

TYPE	DIAMETER NOMINAL	KVS	SPECIAL KVS VALUE	STROKE
V-BR240S-15-0,16	DN 15	0.16 m ³ /h		20 mm
V-BR240S-15-0,25	DN 15	0.25 m ³ /h		20 mm
V-BR240S-15-0,40	DN 15	0.4 m ³ /h		20 mm
V-BR240S-15-0,63	DN 15	0.63 m ³ /h		20 mm
V-BR240S-15-1,0	DN 15	1.0 m ³ /h		20 mm
V-BR240S-15-1,25	DN 15	1.25 m ³ /h		20 mm
V-BR240S-15-1,60	DN 15	1.6 m ³ /h		20 mm
V-BR240S-15-2,5	DN 15	2.5 m ³ /h		20 mm
V-BR240S-15-4,0	DN 15	4.0 m ³ /h		20 mm
V-BR240S-20-2,5	DN 20	2.5 m ³ /h	•	20 mm
V-BR240S-20-4,0	DN 20	4.0 m ³ /h		20 mm
V-BR240S-20-5,0	DN 20	5.0 m ³ /h	•	20 mm
V-BR240S-20-6,3	DN 20	6.3 m ³ /h		20 mm
V-BR240S-25-5,0	DN 25	5.0 m ³ /h	•	20 mm
V-BR240S-25-6,3	DN 25	6.3 m ³ /h		20 mm
V-BR240S-25-8,0	DN 25	8.0 m ³ /h	•	20 mm
V-BR240S-25-10,0	DN 25	10.0 m ³ /h		20 mm

◀ CONTINUED FROM PAGE 306

TYPE LIST

TYPE	DIAMETER NOMINAL	KVS	SPECIAL KVS VALUE	STROKE
V-BR240S-32-8,0	DN 32	8.0 m ³ /h	•	20 mm
V-BR240S-32-10,0	DN 32	10.0 m ³ /h		20 mm
V-BR240S-32-12,5	DN 32	12.5 m ³ /h	•	20 mm
V-BR240S-32-16,0	DN 32	16.0 m ³ /h		20 mm
V-BR240S-40-12,5	DN 40	12.5 m ³ /h	•	20 mm
V-BR240S-40-16,0	DN 40	16.0 m ³ /h		20 mm
V-BR240S-40-20,0	DN 40	20.0 m ³ /h	•	20 mm
V-BR240S-40-25,0	DN 40	25.0 m ³ /h		20 mm
V-BR240S-50-20,0	DN 50	20.0 m ³ /h	•	30 mm
V-BR240S-50-25,0	DN 50	25.0 m ³ /h		20 mm
V-BR240S-50-31,5	DN 50	31.5 m ³ /h	•	30 mm
V-BR240S-50-40,0	DN 50	40.0 m ³ /h		30 mm
V-BR240S-65-31,5	DN 65	31.5 m ³ /h	•	30 mm
V-BR240S-65-40,0	DN 65	40.0 m ³ /h		30 mm
V-BR240S-65-50,0	DN 65	50.0 m ³ /h	•	30 mm
V-BR240S-65-63,0	DN 65	63.0 m ³ /h		30 mm
V-BR240S-80-50,0	DN 80	50.0 m ³ /h	•	50 mm
V-BR240S-80-63,0	DN 80	63.0 m ³ /h		50 mm
V-BR240S-80-80,0	DN 80	80.0 m ³ /h	•	50 mm
V-BR240S-80-100,0	DN 80	100.0 m ³ /h		50 mm
V-BR240S-100-80,0	DN 100	80.0 m ³ /h	•	50 mm
V-BR240S-100-100,0	DN 100	100.0 m ³ /h		50 mm
V-BR240S-100-125,0	DN 100	125.0 m ³ /h	•	50 mm
V-BR240S-100-160,0	DN 100	160.0 m ³ /h		50 mm
V-BR240S-125-125,0	DN 125	125.0 m ³ /h		60 mm
V-BR240S-125-160,0	DN 125	160.0 m ³ /h		60 mm
V-BR240S-125-200,0	DN 125	200.0 m ³ /h	•	60 mm
V-BR240S-125-250,0	DN 125	250.0 m ³ /h		60 mm
V-BR240S-150-200,0	DN 150	200.0 m ³ /h	•	60 mm
V-BR240S-150-250,0	DN 150	250.0 m ³ /h		60 mm
V-BR240S-150-315,0	DN 150	315.0 m ³ /h	•	60 mm
V-BR240S-150-400,0	DN 150	400.0 m ³ /h		60 mm

CONTINUED ON PAGE 308 ►

◀ CONTINUED FROM PAGE 307

POSSIBLE COMBINATIONS

VALVE TYPE	VALVE ACTUATOR					
	Δ PMAX S-MC103	Δ PMAX S-MC163	Δ PMAX S-MC253	Δ PMAX S-MC503	Δ PMAX S-MC1003	Δ PMAX S-MC1503
V-BR240S-15-0,16	3500 kPa	4000 kPa	4000 kPa	4000 kPa	-	-
V-BR240S-15-0,25	3500 kPa	4000 kPa	4000 kPa	4000 kPa	-	-
V-BR240S-15-0,40	3500 kPa	4000 kPa	4000 kPa	4000 kPa	-	-
V-BR240S-15-0,63	3500 kPa	4000 kPa	4000 kPa	4000 kPa	-	-
V-BR240S-15-1,0	3500 kPa	4000 kPa	4000 kPa	4000 kPa	-	-
V-BR240S-15-1,25	3500 kPa	4000 kPa	4000 kPa	4000 kPa	-	-
V-BR240S-15-1,60	3500 kPa	4000 kPa	4000 kPa	4000 kPa	-	-
V-BR240S-15-2,5	3500 kPa	2400 kPa	4000 kPa	4000 kPa	-	-
V-BR240S-15-4,0	1250 kPa	2400 kPa	4000 kPa	4000 kPa	-	-
V-BR240S-20-2,5	1250 kPa	2400 kPa	4000 kPa	4000 kPa	-	-
V-BR240S-20-4,0	1250 kPa	2400 kPa	4000 kPa	4000 kPa	-	-
V-BR240S-20-5,0	1250 kPa	2400 kPa	4000 kPa	4000 kPa	-	-
V-BR240S-20-6,3	1250 kPa	2400 kPa	4000 kPa	4000 kPa	-	-
V-BR240S-25-5,0	1050 kPa	2050 kPa	3500 kPa	4000 kPa	-	-
V-BR240S-25-6,3	1050 kPa	2050 kPa	3500 kPa	4000 kPa	-	-
V-BR240S-25-8,0	1050 kPa	2050 kPa	3500 kPa	4000 kPa	-	-
V-BR240S-25-10,0	1050 kPa	2050 kPa	3500 kPa	4000 kPa	-	-
V-BR240S-32-8,0	600 kPa	1250 kPa	2200 kPa	4000 kPa	-	-
V-BR240S-32-10,0	600 kPa	1250 kPa	2200 kPa	4000 kPa	-	-
V-BR240S-32-12,5	600 kPa	1250 kPa	2200 kPa	4000 kPa	-	-
V-BR240S-32-16,0	600 kPa	1250 kPa	2200 kPa	4000 kPa	-	-
V-BR240S-40-12,5	350 kPa	750 kPa	1400 kPa	3150 kPa	-	-
V-BR240S-40-16,0	350 kPa	750 kPa	1400 kPa	3150 kPa	-	-
V-BR240S-40-20,0	350 kPa	750 kPa	1400 kPa	3150 kPa	-	-
V-BR240S-40-25,0	350 kPa	750 kPa	1400 kPa	3150 kPa	-	-
V-BR240S-50-20,0	-	450 kPa	850 kPa	1950 kPa	-	-
V-BR240S-50-25,0	-	450 kPa	850 kPa	1950 kPa	-	-
V-BR240S-50-31,5	-	450 kPa	850 kPa	1950 kPa	-	-
V-BR240S-50-40,0	-	450 kPa	850 kPa	1950 kPa	-	-
V-BR240S-65-31,5	-	300 kPa	540 kPa	1250 kPa	2150 kPa	-
V-BR240S-65-40,0	-	300 kPa	540 kPa	1250 kPa	2150 kPa	4000 kPa

◀ CONTINUED FROM PAGE 308

POSSIBLE COMBINATIONS

VALVE TYPE	VALVE ACTUATOR					
	ΔP_{MAX} S-MC103	ΔP_{MAX} S-MC163	ΔP_{MAX} S-MC253	ΔP_{MAX} S-MC503	ΔP_{MAX} S-MC1003	ΔP_{MAX} S-MC1503
V-BR240S-65-50,0	-	300 kPa	540 kPa	1250 kPa	2150 kPa	-
V-BR240S-65-63,0	-	300 kPa	540 kPa	1250 kPa	2150 kPa	4000 kPa
V-BR240S-80-50,0	-	-	350 kPa	850 kPa	1500 kPa	-
V-BR240S-80-63,0	-	-	350 kPa	850 kPa	1500 kPa	2800 kPa
V-BR240S-80-80,0	-	-	350 kPa	850 kPa	1500 kPa	-
V-BR240S-80-100,0	-	-	350 kPa	850 kPa	1500 kPa	2800 kPa
V-BR240S-100-80,0	-	-	200 kPa	500 kPa	950 kPa	-
V-BR240S-100-100,0	-	-	200 kPa	500 kPa	950 kPa	1700 kPa
V-BR240S-100-125,0	-	-	200 kPa	500 kPa	950 kPa	-
V-BR240S-100-160,0	-	-	200 kPa	500 kPa	950 kPa	1700 kPa
V-BR240S-125-125,0	-	-	-	290 kPa	500 kPa	950 kPa
V-BR240S-125-160,0	-	-	-	290 kPa	500 kPa	950 kPa
V-BR240S-125-200,0	-	-	-	290 kPa	500 kPa	950 kPa
V-BR240S-125-250,0	-	-	-	290 kPa	500 kPa	950 kPa
V-BR240S-150-200,0	-	-	-	190 kPa	350 kPa	700 kPa
V-BR240S-150-250,0	-	-	-	190 kPa	350 kPa	700 kPa
V-BR240S-150-315,0	-	-	-	190 kPa	350 kPa	700 kPa
V-BR240S-150-400,0	-	-	-	190 kPa	350 kPa	700 kPa

Three-way valves of cast steel with flanged connection | PN40 | up to 350 °C

DIGICONTROL V-BR340S-...

Data sheet number 85162



Suitable in building and process engineering for various media 0...+200 °C. Suitable with stuffing box extension or stem seal with stainless steel bellow from -10...+350 °C and for austenitic cast steel from -30...+350 °C. Suitable with stem heater for water with antifreeze compounds down to -10 °C and for austenitic cast steel down to -30 °C.

TECHNICAL DATA

Pressure stage	PN40
Rangeability	≥ 50:1
Overall length	EN 558-1 basic series 1
Leakage rate	EN 1349 – seat-leakage VI G 1 (≤ 0,01 % of kvs-value)
Characteristic line	<ul style="list-style-type: none"> ■ ≤ DN 40: A->AB equal % (Option: linear), B->AB linear ■ ≥ DN 50: A->AB equal % mod. (Option: linear), B->AB linear
Cone	CrNi-steel 1.4057
Spindle	CrMo-steel 1.4122
Stem sealing	O-rings EPDM, FKM, Fluoraz or PTFE lip seals or pure graphite packing depending on medium and operating temperature
Mounting	Flanges acc. EN 1092-2 type 21
Housing	Cast steel 1.0619+N

TYPE LIST

TYPE	DIAMETER NOMINAL	KVS	SPECIAL KVS VALUE	STROKE
V-BR340S-15-2,5	DN 15	2.5 m ³ /h		20 mm
V-BR340S-15-4,0	DN 15	4.0 m ³ /h		20 mm
V-BR340S-20-2,5	DN 20	2.5 m ³ /h	•	20 mm
V-BR340S-20-4,0	DN 20	4.0 m ³ /h	•	20 mm
V-BR340S-20-5,0	DN 20	5.0 m ³ /h		20 mm
V-BR340S-20-6,3	DN 20	6.3 m ³ /h		20 mm
V-BR340S-25-5,0	DN 25	5.0 m ³ /h	•	20 mm
V-BR340S-25-6,3	DN 25	6.3 m ³ /h	•	20 mm
V-BR340S-25-8,0	DN 25	8.0 m ³ /h		20 mm
V-BR340S-25-10,0	DN 25	10.0 m ³ /h		20 mm
V-BR340S-32-8,0	DN 32	8.0 m ³ /h	•	20 mm
V-BR340S-32-10,0	DN 32	10.0 m ³ /h	•	20 mm
V-BR340S-32-12,5	DN 32	12.5 m ³ /h		20 mm
V-BR340S-32-16,0	DN 32	16.0 m ³ /h		20 mm
V-BR340S-40-12,5	DN 40	12.5 m ³ /h	•	20 mm
V-BR340S-40-16,0	DN 40	16.0 m ³ /h	•	20 mm
V-BR340S-40-20,0	DN 40	20.0 m ³ /h		20 mm

◀ CONTINUED FROM PAGE 310

TYPE LIST

TYPE	DIAMETER NOMINAL	KVS	SPECIAL KVS VALUE	STROKE
V-BR340S-40-25,0	DN 40	25.0 m ³ /h		20 mm
V-BR340S-50-20,0	DN 50	20.0 m ³ /h	•	30 mm
V-BR340S-50-25,0	DN 50	25.0 m ³ /h	•	30 mm
V-BR340S-50-31,5	DN 50	31.5 m ³ /h		30 mm
V-BR340S-50-40,0	DN 50	40.0 m ³ /h		30 mm
V-BR340S-65-31,5	DN 65	31.5 m ³ /h	•	30 mm
V-BR340S-65-40,0	DN 65	40.0 m ³ /h	•	30 mm
V-BR340S-65-50,0	DN 65	50.0 m ³ /h		30 mm
V-BR340S-65-63,0	DN 65	63.0 m ³ /h		30 mm
V-BR340S-80-50,0	DN 80	50.0 m ³ /h	•	50 mm
V-BR340S-80-63,0	DN 80	63.0 m ³ /h	•	50 mm
V-BR340S-80-80,0	DN 80	80.0 m ³ /h		50 mm
V-BR340S-80-100,0	DN 80	100.0 m ³ /h		50 mm
V-BR340S-100-80,0	DN 100	80.0 m ³ /h	•	50 mm
V-BR340S-100-100,0	DN 100	100.0 m ³ /h	•	50 mm
V-BR340S-100-125,0	DN 100	125.0 m ³ /h		50 mm
V-BR340S-100-160,0	DN 100	160.0 m ³ /h		50 mm
V-BR340S-125-125,0	DN 125	125.0 m ³ /h	•	60 mm
V-BR340S-125-160,0	DN 125	160.0 m ³ /h	•	60 mm
V-BR340S-125-200,0	DN 125	200.0 m ³ /h		60 mm
V-BR340S-125-250,0	DN 125	250.0 m ³ /h		60 mm
V-BR340S-150-200,0	DN 150	200.0 m ³ /h	•	60 mm
V-BR340S-150-250,0	DN 150	250.0 m ³ /h	•	60 mm
V-BR340S-150-315,0	DN 150	315.0 m ³ /h		60 mm
V-BR340S-150-400,0	DN 150	400.0 m ³ /h		60 mm

POSSIBLE COMBINATIONS

VALVE TYPE	VALVE ACTUATOR					
	ΔP _{MAX} S-MC103	ΔP _{MAX} S-MC163	ΔP _{MAX} S-MC253	ΔP _{MAX} S-MC503	ΔP _{MAX} S-MC1003	ΔP _{MAX} S-MC1503
V-BR340S-15-2,5	1250 kPa	2400 kPa	4000 kPa	4000 kPa	-	-
V-BR340S-15-4,0	1250 kPa	2400 kPa	4000 kPa	4000 kPa	-	-
V-BR340S-20-2,5	1250 kPa	2400 kPa	4000 kPa	4000 kPa	-	-
V-BR340S-20-4,0	1250 kPa	2400 kPa	4000 kPa	4000 kPa	-	-

CONTINUED ON PAGE 312 ▶

◀ CONTINUED FROM PAGE 311

POSSIBLE COMBINATIONS

VALVE TYPE	VALVE ACTUATOR					
	ΔP_{MAX} S-MC103	ΔP_{MAX} S-MC163	ΔP_{MAX} S-MC253	ΔP_{MAX} S-MC503	ΔP_{MAX} S-MC1003	ΔP_{MAX} S-MC1503
V-BR340S-20-5,0	1250 kPa	2400 kPa	4000 kPa	4000 kPa	-	-
V-BR340S-20-6,3	1250 kPa	2400 kPa	4000 kPa	4000 kPa	-	-
V-BR340S-25-5,0	1050 kPa	2050 kPa	3500 kPa	4000 kPa	-	-
V-BR340S-25-6,3	1050 kPa	2050 kPa	3500 kPa	4000 kPa	-	-
V-BR340S-25-8,0	1050 kPa	2050 kPa	3500 kPa	4000 kPa	-	-
V-BR340S-25-10,0	1050 kPa	2050 kPa	3500 kPa	4000 kPa	-	-
V-BR340S-32-8,0	600 kPa	1250 kPa	2200 kPa	4000 kPa	-	-
V-BR340S-32-10,0	600 kPa	1250 kPa	2200 kPa	4000 kPa	-	-
V-BR340S-32-12,5	600 kPa	1250 kPa	2200 kPa	4000 kPa	-	-
V-BR340S-32-16,0	600 kPa	1250 kPa	2200 kPa	4000 kPa	-	-
V-BR340S-40-12,5	350 kPa	750 kPa	1400 kPa	3150 kPa	-	-
V-BR340S-40-16,0	350 kPa	750 kPa	1400 kPa	3150 kPa	-	-
V-BR340S-40-20,0	350 kPa	750 kPa	1400 kPa	3150 kPa	-	-
V-BR340S-40-25,0	350 kPa	750 kPa	1400 kPa	3150 kPa	-	-
V-BR340S-50-20,0	-	450 kPa	850 kPa	1950 kPa	-	-
V-BR340S-50-25,0	-	450 kPa	850 kPa	1950 kPa	-	-
V-BR340S-50-31,5	-	450 kPa	850 kPa	1950 kPa	-	-
V-BR340S-50-40,0	-	450 kPa	850 kPa	1950 kPa	-	-
V-BR340S-65-31,5	-	300 kPa	540 kPa	1250 kPa	2150 kPa	-
V-BR340S-65-40,0	-	300 kPa	540 kPa	1250 kPa	2150 kPa	-
V-BR340S-65-50,0	-	300 kPa	540 kPa	1250 kPa	2150 kPa	4000 kPa
V-BR340S-65-63,0	-	300 kPa	540 kPa	1250 kPa	2150 kPa	4000 kPa
V-BR340S-80-50,0	-	-	350 kPa	880 kPa	1500 kPa	-
V-BR340S-80-63,0	-	-	350 kPa	880 kPa	1500 kPa	-
V-BR340S-80-80,0	-	-	350 kPa	850 kPa	1500 kPa	2800 kPa
V-BR340S-80-100,0	-	-	350 kPa	850 kPa	1500 kPa	2800 kPa
V-BR340S-100-80,0	-	-	200 kPa	540 kPa	950 kPa	-
V-BR340S-100-100,0	-	-	200 kPa	540 kPa	950 kPa	-
V-BR340S-100-125,0	-	-	200 kPa	500 kPa	950 kPa	1700 kPa
V-BR340S-100-160,0	-	-	200 kPa	500 kPa	950 kPa	1700 kPa
V-BR340S-125-125,0	-	-	-	290 kPa	500 kPa	950 kPa

◀ CONTINUED FROM PAGE 312

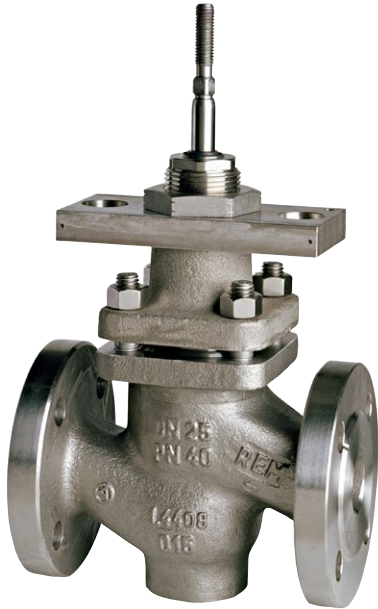
POSSIBLE COMBINATIONS

VALVE TYPE	VALVE ACTUATOR					
	ΔP_{MAX} S-MC103	ΔP_{MAX} S-MC163	ΔP_{MAX} S-MC253	ΔP_{MAX} S-MC503	ΔP_{MAX} S-MC1003	ΔP_{MAX} S-MC1503
V-BR340S-125-160,0	-	-	-	290 kPa	500 kPa	950 kPa
V-BR340S-125-200,0	-	-	-	290 kPa	500 kPa	950 kPa
V-BR340S-125-250,0	-	-	-	290 kPa	500 kPa	950 kPa
V-BR340S-150-200,0	-	-	-	190 kPa	350 kPa	700 kPa
V-BR340S-150-250,0	-	-	-	190 kPa	350 kPa	700 kPa
V-BR340S-150-315,0	-	-	-	190 kPa	350 kPa	700 kPa
V-BR340S-150-400,0	-	-	-	190 kPa	350 kPa	700 kPa

Two-way valves of stainless steel with flanged connection | PN40 | up to 350 °C

DIGICONTROL V-BR240E-...

Data sheet number 85162



Suitable in building and process engineering for various media 0...+200 °C. Suitable with stuffing box extension or stem seal with stainless steel bellow from -10...+350 °C and for austenitic cast steel from -30...+350 °C. Suitable with stem heater for water with antifreeze compounds down to -10 °C and for austenitic cast steel down to -30 °C.

TECHNICAL DATA

Pressure stage	PN40
Rangeability	≥ 50:1
Overall length	EN 558-1 basic series 1
Leakage rate	EN 1349 – seat-leakage VI G 1 (≤ 0,01 % of kvs-value)
Characteristic line	<ul style="list-style-type: none"> ■ ≤ DN 50: equal %, Option: linear ■ ≥ DN 65: equal % mod., Option: linear ■ Perforated plug: equal %, Option: linear
Cone	CrNi-steel 1.4571
Spindle	CrNi-steel 1.4571
Stem sealing	O-rings EPDM, FKM, Fluoraz or PTFE lip seals or pure graphite packing depending on medium and operating temperature
Mounting	Flanges acc. EN 1092-2 type 21
Housing	Austen. Stainless steel 1.4408

TYPE LIST

TYPE	DIAMETER NOMINAL	KVS	SPECIAL KVS VALUE	STROKE
V-BR240E-15-0,16	DN 15	0.16 m ³ /h		20 mm
V-BR240E-15-0,25	DN 15	0.25 m ³ /h		20 mm
V-BR240E-15-0,40	DN 15	0.4 m ³ /h		20 mm
V-BR240E-15-0,63	DN 15	0.63 m ³ /h		20 mm
V-BR240E-15-1,0	DN 15	1.0 m ³ /h		20 mm
V-BR240E-15-1,25	DN 15	1.25 m ³ /h		20 mm
V-BR240E-15-1,60	DN 15	1.6 m ³ /h		20 mm
V-BR240E-15-2,5	DN 15	2.5 m ³ /h		20 mm
V-BR240E-15-4,0	DN 15	4.0 m ³ /h		20 mm
V-BR240E-20-2,5	DN 20	2.5 m ³ /h	•	20 mm
V-BR240E-20-4,0	DN 20	4.0 m ³ /h		20 mm
V-BR240E-20-5,0	DN 20	5.0 m ³ /h	•	20 mm
V-BR240E-20-6,3	DN 20	6.3 m ³ /h		20 mm
V-BR240E-25-5,0	DN 25	5.0 m ³ /h	•	20 mm
V-BR240E-25-6,3	DN 25	6.3 m ³ /h		20 mm
V-BR240E-25-8,0	DN 25	8.0 m ³ /h	•	20 mm
V-BR240E-25-10,0	DN 25	10.0 m ³ /h		20 mm

◀ CONTINUED FROM PAGE 314

TYPE LIST

TYPE	DIAMETER NOMINAL	KVS	SPECIAL KVS VALUE	STROKE
V-BR240E-32-8,0	DN 32	8.0 m ³ /h	•	20 mm
V-BR240E-32-10	DN 32	10.0 m ³ /h		20 mm
V-BR240E-32-12,5	DN 32	12.5 m ³ /h	•	20 mm
V-BR240E-32-16,0	DN 32	16.0 m ³ /h		20 mm
V-BR240E-40-12,5	DN 40	12.5 m ³ /h	•	20 mm
V-BR240E-40-16,0	DN 40	16.0 m ³ /h		20 mm
V-BR240E-40-20,0	DN 40	20.0 m ³ /h	•	20 mm
V-BR240E-40-25,0	DN 40	25.0 m ³ /h		20 mm
V-BR240E-50-20,0	DN 50	20.0 m ³ /h	•	30 mm
V-BR240E-50-25,0	DN 50	25.0 m ³ /h		30 mm
V-BR240E-50-31,5	DN 50	31.5 m ³ /h	•	30 mm
V-BR240E-50-40,0	DN 50	40.0 m ³ /h		30 mm
V-BR240E-65-31,5	DN 65	31.5 m ³ /h	•	30 mm
V-BR240E-65-40,0	DN 65	40.0 m ³ /h		30 mm
V-BR240E-65-50,0	DN 65	50.0 m ³ /h	•	30 mm
V-BR240E-65-63,0	DN 65	63.0 m ³ /h		30 mm
V-BR240E-80-50,0	DN 80	50.0 m ³ /h	•	50 mm
V-BR240E-80-63,0	DN 80	63.0 m ³ /h		50 mm
V-BR240E-80-80,0	DN 80	80.0 m ³ /h	•	50 mm
V-BR240E-80-100,0	DN 80	100.0 m ³ /h		50 mm
V-BR240E-100-80,0	DN 100	80.0 m ³ /h	•	50 mm
V-BR240E-100-100,0	DN 100	100.0 m ³ /h		50 mm
V-BR240E-100-125,0	DN 100	125.0 m ³ /h	•	50 mm
V-BR240E-100-160,0	DN 100	160.0 m ³ /h		50 mm
V-BR240E-125-125,0	DN 125	125.0 m ³ /h	•	60 mm
V-BR240E-125-160,0	DN 125	160.0 m ³ /h		60 mm
V-BR240E-125-200,0	DN 125	200.0 m ³ /h	•	60 mm
V-BR240E-125-250,0	DN 125	250.0 m ³ /h		60 mm
V-BR240E-150-200,0	DN 150	200.0 m ³ /h	•	60 mm
V-BR240E-150-250,0	DN 150	250.0 m ³ /h		60 mm
V-BR240E-150-315,0	DN 150	315.0 m ³ /h	•	60 mm
V-BR240E-150-400,0	DN 150	400.0 m ³ /h		60 mm

CONTINUED ON PAGE 316 ▶

◀ CONTINUED FROM PAGE 315

POSSIBLE COMBINATIONS

VALVE TYPE	VALVE ACTUATOR					
	ΔP_{MAX} S-MC103	ΔP_{MAX} S-MC163	ΔP_{MAX} S-MC253	ΔP_{MAX} S-MC503	ΔP_{MAX} S-MC1003	ΔP_{MAX} S-MC1503
V-BR240E-15-0,16	3500 kPa	4000 kPa	4000 kPa	4000 kPa	-	-
V-BR240E-15-0,25	3500 kPa	4000 kPa	4000 kPa	4000 kPa	-	-
V-BR240E-15-0,40	3500 kPa	4000 kPa	4000 kPa	4000 kPa	-	-
V-BR240E-15-0,63	3500 kPa	4000 kPa	4000 kPa	4000 kPa	-	-
V-BR240E-15-1,0	3500 kPa	4000 kPa	4000 kPa	4000 kPa	-	-
V-BR240E-15-1,25	3500 kPa	4000 kPa	4000 kPa	4000 kPa	-	-
V-BR240E-15-1,60	3500 kPa	4000 kPa	4000 kPa	4000 kPa	-	-
V-BR240E-15-2,5	3500 kPa	4000 kPa	4000 kPa	4000 kPa	-	-
V-BR240E-15-4,0	1250 kPa	2400 kPa	4000 kPa	4000 kPa	-	-
V-BR240E-20-2,5	1250 kPa	2400 kPa	4000 kPa	4000 kPa	-	-
V-BR240E-20-4,0	1250 kPa	2400 kPa	4000 kPa	4000 kPa	-	-
V-BR240E-20-5,0	1250 kPa	2400 kPa	4000 kPa	4000 kPa	-	-
V-BR240E-20-6,3	1250 kPa	2400 kPa	4000 kPa	4000 kPa	-	-
V-BR240E-25-5,0	1050 kPa	2050 kPa	3500 kPa	4000 kPa	-	-
V-BR240E-25-6,3	1050 kPa	2050 kPa	3500 kPa	4000 kPa	-	-
V-BR240E-25-8,0	1050 kPa	2050 kPa	3500 kPa	4000 kPa	-	-
V-BR240E-25-10,0	1050 kPa	2050 kPa	3500 kPa	4000 kPa	-	-
V-BR240E-32-8,0	600 kPa	1250 kPa	2200 kPa	4000 kPa	-	-
V-BR240E-32-10	600 kPa	1250 kPa	2200 kPa	4000 kPa	-	-
V-BR240E-32-12,5	600 kPa	1250 kPa	2200 kPa	4000 kPa	-	-
V-BR240E-32-16,0	600 kPa	1250 kPa	2200 kPa	4000 kPa	-	-
V-BR240E-40-12,5	350 kPa	750 kPa	1400 kPa	3150 kPa	-	-
V-BR240E-40-16,0	350 kPa	750 kPa	1400 kPa	3150 kPa	-	-
V-BR240E-40-20,0	350 kPa	750 kPa	1400 kPa	3150 kPa	-	-
V-BR240E-40-25,0	350 kPa	750 kPa	1400 kPa	3150 kPa	-	-
V-BR240E-50-20,0	-	450 kPa	850 kPa	1950 kPa	-	-
V-BR240E-50-25,0	-	450 kPa	850 kPa	1950 kPa	-	-
V-BR240E-50-31,5	-	450 kPa	850 kPa	1950 kPa	-	-
V-BR240E-50-40,0	-	450 kPa	850 kPa	1950 kPa	-	-
V-BR240E-65-31,5	-	300 kPa	540 kPa	1250 kPa	2150 kPa	-
V-BR240E-65-40,0	-	300 kPa	540 kPa	1250 kPa	2150 kPa	4000 kPa

◀ CONTINUED FROM PAGE 316

POSSIBLE COMBINATIONS

VALVE TYPE	VALVE ACTUATOR					
	ΔP_{MAX} S-MC103	ΔP_{MAX} S-MC163	ΔP_{MAX} S-MC253	ΔP_{MAX} S-MC503	ΔP_{MAX} S-MC1003	ΔP_{MAX} S-MC1503
V-BR240E-65-50,0	-	300 kPa	540 kPa	1250 kPa	2150 kPa	-
V-BR240E-65-63,0	-	300 kPa	540 kPa	850 kPa	2150 kPa	4000 kPa
V-BR240E-80-50,0	-	-	350 kPa	850 kPa	1500 kPa	-
V-BR240E-80-63,0	-	-	350 kPa	850 kPa	1500 kPa	2800 kPa
V-BR240E-80-80,0	-	-	350 kPa	850 kPa	1500 kPa	-
V-BR240E-80-100,0	-	-	350 kPa	850 kPa	1500 kPa	2800 kPa
V-BR240E-100-80,0	-	-	200 kPa	500 kPa	950 kPa	-
V-BR240E-100-100,0	-	-	200 kPa	500 kPa	950 kPa	1700 kPa
V-BR240E-100-125,0	-	-	200 kPa	500 kPa	950 kPa	-
V-BR240E-100-160,0	-	-	200 kPa	500 kPa	950 kPa	1700 kPa
V-BR240E-125-125,0	-	-	-	290 kPa	500 kPa	950 kPa
V-BR240E-125-160,0	-	-	-	290 kPa	500 kPa	950 kPa
V-BR240E-125-200,0	-	-	-	290 kPa	500 kPa	950 kPa
V-BR240E-125-250,0	-	-	-	290 kPa	500 kPa	950 kPa
V-BR240E-150-200,0	-	-	-	190 kPa	350 kPa	700 kPa
V-BR240E-150-250,0	-	-	-	190 kPa	350 kPa	700 kPa
V-BR240E-150-315,0	-	-	-	190 kPa	350 kPa	700 kPa
V-BR240E-150-400,0	-	-	-	190 kPa	350 kPa	700 kPa

Three-way valves of stainless steel with flanged connection | PN40 | up to 350 °C

DIGICONTROL V-BR340E-...

Data sheet number 85162



Suitable in building and process engineering for various media 0...+200 °C. Suitable with stuffing box extension or stem seal with stainless steel bellow from -10...+350 °C and for austenitic cast steel from -30...+350 °C. Suitable with stem heater for water with antifreeze compounds down to -10 °C and for austenitic cast steel down to -30 °C.

TECHNICAL DATA

Pressure stage	PN40
Rangeability	≥ 50:1
Overall length	EN 558-1 basic series 1
Leakage rate	EN 1349 – seat-leakage VI G 1 (≤ 0,01 % of kvs-value)
Characteristic line	<ul style="list-style-type: none"> ■ ≤ DN 40: A->AB equal % (Option: linear), B->AB linear ■ ≥ DN 50: A->AB equal % mod. (Option: linear), B->AB linear
Cone	CrNi-Stahl 1.4571
Spindle	CrNi-Stahl 1.4571
Stem sealing	O-rings EPDM, FKM, Fluoraz or PTFE lip seals or pure graphite packing depending on medium and operating temperature
Mounting	Flanges acc. EN 1092-2 type 21
Housing	Austen. Stainless steel 1.4408

TYPE LIST

TYPE	DIAMETER NOMINAL	KVS	SPECIAL KVS VALUE	STROKE
V-BR340E-15-2,5	DN 15	2.5 m ³ /h		20 mm
V-BR340E-15-4,0	DN 15	4.0 m ³ /h		20 mm
V-BR340E-20-2,5	DN 20	2.5 m ³ /h	•	20 mm
V-BR340E-20-4,0	DN 20	4.0 m ³ /h	•	20 mm
V-BR340E-20-5,0	DN 20	5.0 m ³ /h		20 mm
V-BR340E-20-6,3	DN 20	6.3 m ³ /h	•	20 mm
V-BR340E-25-5,0	DN 25	5.0 m ³ /h	•	20 mm
V-BR340E-25-6,3	DN 25	6.3 m ³ /h		20 mm
V-BR340E-25-8,0	DN 25	8.0 m ³ /h		20 mm
V-BR340E-25-10,0	DN 25	10.0 m ³ /h		20 mm
V-BR340E-32-8,0	DN 32	8.0 m ³ /h	•	20 mm
V-BR340E-32-10,0	DN 32	10.0 m ³ /h	•	20 mm
V-BR340E-32-12,5	DN 32	12.5 m ³ /h		20 mm
V-BR340E-32-16,0	DN 32	16.0 m ³ /h		20 mm
V-BR340E-40-12,5	DN 40	12.5 m ³ /h	•	20 mm
V-BR340E-40-16,0	DN 40	16.0 m ³ /h	•	20 mm
V-BR340E-40-20,0	DN 40	20.0 m ³ /h		20 mm

◀ CONTINUED FROM PAGE 318

TYPE LIST

TYPE	DIAMETER NOMINAL	KVS	SPECIAL KVS VALUE	STROKE
V-BR340E-40-25,0	DN 40	25.0 m ³ /h		20 mm
V-BR340E-50-20,0	DN 50	20.0 m ³ /h	•	30 mm
V-BR340E-50-25,0	DN 50	25.0 m ³ /h	•	30 mm
V-BR340E-50-31,5	DN 50	31.5 m ³ /h		30 mm
V-BR340E-50-40,0	DN 50	40.0 m ³ /h		30 mm
V-BR340E-65-31,5	DN 65	31.5 m ³ /h	•	30 mm
V-BR340E-65-40,0	DN 65	40.0 m ³ /h	•	30 mm
V-BR340E-65-50,0	DN 65	50.0 m ³ /h		30 mm
V-BR340E-65-63,0	DN 65	63.0 m ³ /h		30 mm
V-BR340E-80-50,0	DN 80	50.0 m ³ /h	•	50 mm
V-BR340E-80-63,0	DN 80	63.0 m ³ /h	•	50 mm
V-BR340E-80-80,0	DN 80	80.0 m ³ /h		50 mm
V-BR340E-80-100,0	DN 80	100.0 m ³ /h		50 mm
V-BR340E-100-80,0	DN 100	80.0 m ³ /h	•	50 mm
V-BR340E-100-100,0	DN 100	100.0 m ³ /h	•	50 mm
V-BR340E-100-125,0	DN 100	125.0 m ³ /h		50 mm
V-BR340E-100-160,0	DN 100	160.0 m ³ /h		50 mm
V-BR340E-125-125,0	DN 125	125.0 m ³ /h	•	60 mm
V-BR340E-125-160,0	DN 125	160.0 m ³ /h	•	60 mm
V-BR340E-125-200,0	DN 125	200.0 m ³ /h		60 mm
V-BR340E-125-250,0	DN 125	250.0 m ³ /h		60 mm
V-BR340E-150-200,0	DN 150	200.0 m ³ /h	•	60 mm
V-BR340E-150-250,0	DN 150	250.0 m ³ /h	•	60 mm
V-BR340E-150-315,0	DN 150	315.0 m ³ /h		60 mm
V-BR340E-150-400,0	DN 150	400.0 m ³ /h		60 mm

POSSIBLE COMBINATIONS

VALVE TYPE	VALVE ACTUATOR					
	ΔP _{MAX} S-MC103	ΔP _{MAX} S-MC163	ΔP _{MAX} S-MC253	ΔP _{MAX} S-MC503	ΔP _{MAX} S-MC1003	ΔP _{MAX} S-MC1503
V-BR340E-15-2,5	1250 kPa	2400 kPa	4000 kPa	4000 kPa	-	-
V-BR340E-15-4,0	1250 kPa	2400 kPa	4000 kPa	4000 kPa	-	-
V-BR340E-20-2,5	1250 kPa	2400 kPa	4000 kPa	4000 kPa	-	-
V-BR340E-20-4,0	1250 kPa	2400 kPa	4000 kPa	4000 kPa	-	-

CONTINUED ON PAGE 320 ▶

◀ CONTINUED FROM PAGE 319

POSSIBLE COMBINATIONS

VALVE TYPE	VALVE ACTUATOR					
	ΔP_{MAX} S-MC103	ΔP_{MAX} S-MC163	ΔP_{MAX} S-MC253	ΔP_{MAX} S-MC503	ΔP_{MAX} S-MC1003	ΔP_{MAX} S-MC1503
V-BR340E-20-5,0	1250 kPa	2400 kPa	4000 kPa	4000 kPa	-	-
V-BR340E-20-6,3	1250 kPa	2400 kPa	4000 kPa	4000 kPa	-	-
V-BR340E-25-5,0	1050 kPa	2050 kPa	3500 kPa	4000 kPa	-	-
V-BR340E-25-6,3	1050 kPa	2050 kPa	3500 kPa	4000 kPa	-	-
V-BR340E-25-8,0	1050 kPa	2050 kPa	3500 kPa	4000 kPa	-	-
V-BR340E-25-10,0	1050 kPa	2050 kPa	3500 kPa	4000 kPa	-	-
V-BR340E-32-8,0	600 kPa	1250 kPa	2200 kPa	4000 kPa	-	-
V-BR340E-32-10,0	600 kPa	1250 kPa	2200 kPa	4000 kPa	-	-
V-BR340E-32-12,5	600 kPa	1250 kPa	2200 kPa	4000 kPa	-	-
V-BR340E-32-16,0	600 kPa	1250 kPa	2200 kPa	4000 kPa	-	-
V-BR340E-40-12,5	350 kPa	750 kPa	1400 kPa	3150 kPa	-	-
V-BR340E-40-16,0	350 kPa	750 kPa	1400 kPa	3150 kPa	-	-
V-BR340E-40-20,0	350 kPa	750 kPa	1400 kPa	3150 kPa	-	-
V-BR340E-40-25,0	350 kPa	750 kPa	1400 kPa	3150 kPa	-	-
V-BR340E-50-20,0	-	450 kPa	850 kPa	1950 kPa	-	-
V-BR340E-50-25,0	-	450 kPa	850 kPa	1950 kPa	-	-
V-BR340E-50-31,5	-	450 kPa	850 kPa	1950 kPa	-	-
V-BR340E-50-40,0	-	450 kPa	850 kPa	1950 kPa	-	-
V-BR340E-65-31,5	-	300 kPa	540 kPa	1250 kPa	2150 kPa	-
V-BR340E-65-40,0	-	300 kPa	540 kPa	1250 kPa	2150 kPa	-
V-BR340E-65-50,0	-	300 kPa	540 kPa	1250 kPa	2150 kPa	4000 kPa
V-BR340E-65-63,0	-	300 kPa	540 kPa	1250 kPa	2150 kPa	4000 kPa
V-BR340E-80-50,0	-	-	350 kPa	880 kPa	1500 kPa	-
V-BR340E-80-63,0	-	-	350 kPa	880 kPa	1500 kPa	-
V-BR340E-80-80,0	-	-	350 kPa	850 kPa	1500 kPa	2800 kPa
V-BR340E-80-100,0	-	-	350 kPa	850 kPa	1500 kPa	2800 kPa
V-BR340E-100-80,0	-	-	200 kPa	540 kPa	950 kPa	-
V-BR340E-100-100,0	-	-	200 kPa	540 kPa	950 kPa	-
V-BR340E-100-125,0	-	-	200 kPa	500 kPa	950 kPa	1700 kPa
V-BR340E-100-160,0	-	-	200 kPa	500 kPa	950 kPa	1700 kPa
V-BR340E-125-125,0	-	-	-	290 kPa	500 kPa	950 kPa

◀ CONTINUED FROM PAGE 320

POSSIBLE COMBINATIONS

VALVE TYPE	VALVE ACTUATOR					
	ΔP_{MAX} S-MC103	ΔP_{MAX} S-MC163	ΔP_{MAX} S-MC253	ΔP_{MAX} S-MC503	ΔP_{MAX} S-MC1003	ΔP_{MAX} S-MC1503
V-BR340E-125-160,0	-	-	-	290 kPa	500 kPa	950 kPa
V-BR340E-125-200,0	-	-	-	290 kPa	500 kPa	950 kPa
V-BR340E-125-250,0	-	-	-	290 kPa	500 kPa	950 kPa
V-BR340E-150-200,0	-	-	-	290 kPa	500 kPa	950 kPa
V-BR340E-150-250,0	-	-	-	190 kPa	350 kPa	700 kPa
V-BR340E-150-315,0	-	-	-	190 kPa	350 kPa	700 kPa
V-BR340E-150-400,0	-	-	-	190 kPa	350 kPa	700 kPa

Electric actuators with microcontroller

DIGICONTROL S-MC15-...

for two-way and three-way valves

V-BR216MZ-... | V-BR316MZ-...

Data sheet number 84707



Electric actuators with microcontroller for two-way and three-way valves

Features

- Microprocessor controlled
- Automatic self-calibration on start up
- Signal processing by a wear-free distance measuring system
- Wire break recognition in 2...10 V DC operation
- Shockproof at 230 V AC, no protective conductor (PE) necessary
- Manual override by means of hexagonal key
- Mechanical position indication
- Operating voltage interrupted in manual operation

TECHNICAL DATA

Frequency	50/60 ± 5 % Hz
Actuating thrust	0.15 kN
End position switch-off	Load-dependent
Weight	0.18 kg
Protection class	IP40
Operating temperature	0...+60 °C

TYPE LIST

TYPE	VOLTAGE	INPUTS	STROKE	POWER CONSUMPTION
S-MC15-24	24 V AC/DC +/- 10 %	3-point, 0(2)...10 V DC	9 mm	2.5 VA
S-MC15-230	230 V AC +6 % / -10 %	3-point	9 mm	2.5 VA

- 1) Actuating time freely adjustable, presetting is marked with *
- 2) Only rectified alternating voltage
- 3) Invertible input and output signal
- 4) Freely adjustable

Electric actuators with microcontroller

DIGICONTROL S-MC55...

for two-way and three-way valves

V-BR216RA-... | V-BR316RA-...

V-BR206GF-... | V-BR306GF-...

V-BR216GF-... | V-BR316GF-...

Data sheet number 84710

Electric actuators with microcontroller for two-way and three-way valves

Features

- Microprocessor controlled
- Automatic self-calibration on start up
- Signal processing by a wear-free distance measuring system
- Wire break recognition in 2...10 V DC and 4...20 mA operation
- Safety position for switching a binary signal (frost protection)
- Input signal Y and output signal X simultaneously reversible
- Hysteresis 0.3 V in continuous operation (fixed value)
- Shockproof at 230 V AC, no protective conductor (PE) necessary
- Manual override by hand wheel
- Mechanical position indication
- Operating voltage interrupted in manual operation



TECHNICAL DATA

Outputs	0...10 V DC / max. 8 mA / min. 1200 Ohm
Frequency	50/60 ± 5 % Hz
Actuating thrust	0.6 kN
Actuating time	9 5* ¹ s/mm
Operating mode	S3-50 % ED c/h 1200 acc. EN 60034-1
Hysteresis	0.3 V
End position switch-off	Load-dependent
Weight	1.5 kg
Protection class	IP54
Operating temperature	0...+60 °C

TYPE LIST

TYPE	VOLTAGE	INPUTS	STROKE	POWER CONSUMPTION
S-MC55-24	24 V AC/DC +/- 10 %	3-point	Max. 14 mm	3.5 VA
S-MC55-230	230 V AC +6 % / -10 %	3-point	Max. 14 mm	7 VA
S-MC55Y	24 V AC/DC +/- 10 %	0(2)...10 V DC / 77 kOhm; 0(4)...20 mA / 0,51 kOhm	Max. 14 mm	3.5 VA

1) Actuating time freely adjustable, presetting is marked with *

2) Only rectified alternating voltage

3) Invertible input and output signal

4) Freely adjustable

Electric actuators with microcontroller

DIGICONTROL S-MC100-...

for two-way and three-way valves

V-BR216RA-... | V-BR316RA-...

V-BR216RA-TW-... | V-BR316RA-TW-...

V-BR206GF-... | V-BR306GF-...

V-BR216GF-... | V-BR316GF-...

Data sheet number 84720



Electric actuators with microcontroller for two-way and three-way valves

Features

- Microprocessor controlled with automatic self-calibration on start up
- LED indication of actuator status
- Signal processing by a wear-free distance measuring system by means of a Hall sensor
- Permanent storage of stroke in EPROM memory, values can not be lost
- Wire break recognition in 2...10 V DC and 4...20 mA operation
- Bonnet detachable in four positions, 90° locking, no screws required
- Safety position for switching a binary signal (frost protection)
- Pull-out manual adjustment with feedback signal
- Fault recognition in continuous operation (in case of blockage due to external influence)
- Input and output signal independently reversible
- Input signal freely adjustable: 3-point or continuous operation
- Hysteresis adjustable on site 0.15 V or 0.5 V in continuous mode
- Shockproof at 230 V AC, no protective conductor (PE) necessary

TECHNICAL DATA

Outputs	0...10 V DC / max. 8 mA / min. 1200 Ohm
Inputs	3-point; 0(2)...10 V DC / 77 kOhm; 0(4)...20 mA / 0,51 kOhm
Frequency	50/60 ± 5 % Hz
Actuating thrust	1.0 kN
Actuating time	12 9* 4 1.9 ¹ s/mm
Operating mode	S3-50 % ED c/h 1200 acc. EN 60034-1
Hysteresis	0.15 0.5 V V
End position switch-off	Load-dependent
Protection class	IP54
Operating temperature	0...+60 °C

TYPE LIST

TYPE	VOLTAGE	STROKE	POWER CONSUMPTION	WEIGHT
S-MC100-24	24 V AC/DC +/- 10 %	Max. 20 mm	6 VA	2.5 kg
S-MC100-230	230 V AC +6 % / -10 %	Max. 20 mm	12 VA	2.5 kg

- 1) Actuating time freely adjustable, presetting is marked with *
- 2) Only rectified alternating voltage
- 3) Invertible input and output signal
- 4) Freely adjustable

Electric actuators for with microcontroller

DIGICONTROL S-MC103-...

for two-way and three-way valves

V-BR216-... | V-BR316-...

V-BR225-... | V-BR325-...

V-BR240S-... | V-BR340S-...

V-BR240E-... | V-BR340E-...

Data sheet number 84730

Electric actuators with microcontroller for two-way and three-way valves

Features

- Microprocessor controlled with automatic self-calibration on start up
- LED indication of actuator status
- Signal processing by a wear-free distance measuring system by means of a Hall sensor
- Permanent storage of stroke in EPROM memory, values can not be lost
- Wire break recognition in 2...10 V DC and 4...20 mA operation
- Bonnet detachable in four positions, 90° locking, no screws required
- Safety position for switching a binary signal (frost protection)
- Pull-out manual adjustment with Feedback signal
- Fault recognition in continuous operation (in case of blockage due to external influence)
- Input and output signal independently reversible
- Input signal freely adjustable: 3-point or modulating
- Hysteresis adjustable on site 0.15 V or 0.5 V in continuous mode
- Shockproof at 230 V AC, no protective conductor (PE) necessary

**TECHNICAL DATA**

Outputs	0...10 V DC / max. 8 mA / min. 1200 Ohm
Inputs	3-point; 0(2)...10 V DC / 77 kOhm; 0(4)...20 mA / 0,51 kOhm
Frequency	50/60 ± 5 % Hz
Actuating thrust	1.0 kN
Actuating time	12 9* 4 1.9 ¹ s/mm
Operating mode	S3-50 % ED c/h 1200 acc. EN 60034-1
Hysteresis	0.15 0.5 V V
End position switch-off	Load-dependent
Protection class	IP54
Operating temperature	0...+60 °C

TYPE LIST

TYPE	VOLTAGE	STROKE	POWER CONSUMPTION	WEIGHT
S-MC103-24	24 V AC/DC +/- 10 %	Max. 20 mm	6 VA	2.5 kg
S-MC103-230	230 V AC +6 % / -10 %	Max. 20 mm	12 VA	2.5 kg

- 1) Actuating time freely adjustable, presetting is marked with *
- 2) Only retified alternating voltage
- 3) Invertible input and output signal
- 4) Freely adjustable

Electric actuators with fail-safe function

DIGICONTROL S-MC103SE-24

for two-way valves

V-BR225

V-BR240E

Data sheet number 84772



Electric lift drive with micro controller for straight-way valves

Characteristics:

- Electric lift drive with defined end position in case of power failure (drive spindle completely extended)
- Electromechanical safety function (spring), hydraulically suspended
- Controlled by microcontroller with automatic calibration during commissioning
- Drive status visible via LED display
- Wire break detection in 2...10 V DC- and 4...20 mA-operation
- Safety position when switching a binary signal (frost protection)
- Disengagable manual adjustment with feedback signal
- Fault detection in continuous operation (in case of blockage by external impact)
- Input signal Y and output signal X can be inverted independently from each other
- On-site adjustable control: three-point or continuous operation

TECHNICAL DATA

Outputs	0...10 V DC / max. 8 mA / min. 1200 Ohm
Inputs	3-point, 0(2)...10 V DC / 77 kOhm; 0(4)...20 mA / 0,51 kOhm
Actuating thrust	1.0 kN
Actuating time	9 s/mm
Emergency Actuating time	0.1 s/mm
Operating mode	S3-50 % ED c/h 1200 acc. EN 60034-1
Hysteresis	0.05 0.15 0.3 0.5 V
End position switch-off	Load-dependent
Protection class	IP54
Operating temperature	0...+60 °C
Type examination	<ul style="list-style-type: none"> ■ 97/23/EC ■ EN14597 Abs DX17 ■ EN60730

TYPE LIST

TYPE	VOLTAGE	STROKE	POWER CONSUMPTION	WEIGHT
S-MC103SE-24	24 V AC +/- 10 %	Max. 20 mm	Max. 25 VA	5.0 kg

- 1) Actuating time freely adjustable, presetting is marked with *
- 2) Only rectified alternating voltage
- 3) Invertible input and output signal
- 4) Freely adjustable

Electric actuators with microcontroller

DIGICONTROL S-MC160-...

for two-way and three-way valves

V-BR216RA-... | V-BR316RA-...

V-BR216RA-TW-... | V-BR316RA-TW-...

V-BR206GF-... | V-BR306GF-...

V-BR216GF-... | V-BR316GF-...

Data sheet number 84740

Electric actuators with microcontroller for two-way and three-way valves

Features

- Microprocessor controlled with automatic self-calibration on start up
- LED indication of actuator status
- Signal processing by a wear-free distance measuring system by means of a Hall sensor
- Permanent storage of stroke in EPROM memory, values can not be lost
- Wire break recognition in 2...10 V DC and 4...20 mA operation
- Bonnet detachable in four positions, 90° locking, no screws required
- Safety position for switching a binary signal (frost protection)
- Pull-out manual adjustment with feedback signal
- Fault recognition in continuous operation (in case of blockage due to external influence)
- Input and output signal independently reversible
- Input signal freely adjustable: 3-point or continuous operation
- Hysteresis adjustable on-site 0.05 V / 0.15 V / 0.3 V or 0.5 V in continuous operation
- Shockproof at 230 V AC, no protective conductor (PE) necessary

**TECHNICAL DATA**

Outputs	0...10 V DC / max. 8 mA / min. 1200 Ohm
Inputs	3-point, 0(2)...10 V DC / 77 kOhm; 0(4)...20 mA / 0,51 kOhm
Frequency	50/60 ± 5 % Hz
Actuating thrust	1.6 kN
Actuating time	6 4* ¹ s/mm
Operating mode	S3-50 % ED c/h 1200 acc. EN 60034-1
Hysteresis	0.05 0.15 0.3 0.5 V V
End position switch-off	Load-dependent
Protection class	IP54
Operating temperature	0...+60 °C

TYPE LIST

TYPE	VOLTAGE	STROKE	POWER CONSUMPTION	WEIGHT
S-MC160-24	24 V AC/DC +/- 10 %	Max. 30 mm	6 VA	3.2 kg
S-MC160-230	230 V AC +6 % / -10 %	Max. 30 mm	12 VA	3.2 kg

- 1) Actuating time freely adjustable, presetting is marked with *
- 2) Only rectified alternating voltage
- 3) Invertible input and output signal
- 4) Freely adjustable

Electric actuators with microcontroller

DIGICONTROL S-MC163-...

for two-way and three-way valves

V-BR216-... | V-BR316-....

V-BR225-... | V-BR325-...

V-BR240S-... | V-BR340S-...

V-BR240E-... | V-BR340E-...

Data sheet number 84750



Electric actuators with microcontroller for two-way and three-way valves

Features

- Microprocessor controlled with automatic self-calibration on start up
- LED indication of actuator status
- Signal processing by a wear-free distance measuring system by means of a Hall sensor
- Permanent storage of stroke in EPROM memory, values can not be lost
- Wire break recognition in 2...10 V DC and 4...20 mA operation
- Bonnet detachable in four positions, 90° locking, no screws required
- Safety position for switching a binary signal (frost protection)
- Pull-out manual adjustment with feedback signal
- Fault recognition in continuous operation (in case of blockage due to external influence)
- Input and output signal independently reversible
- Input signal freely adjustable: 3-point or continuous operation
- Hysteresis adjustable on-site 0.05 V / 0.15 V / 0.3 V or 0.5 V in continuous operation
- Shockproof at 230 V AC, no protective conductor (PE) necessary

TECHNICAL DATA

Outputs	0...10 V DC / max. 8 mA / min. 1200 Ohm
Inputs	3-point, 0(2)...10 V DC / 77 kOhm; 0(4)...20 mA / 0,51 kOhm
Frequency	50/60 ± 5 % Hz
Actuating thrust	1.6 kN
Actuating time	6 4* ¹ s/mm
Operating mode	S3-50 % ED c/h 1200 acc. EN 60034-1
Hysteresis	0.05 0.15 0.3 0.5 V V
End position switch-off	Load-dependent
Protection class	IP54
Operating temperature	0...+60 °C

TYPE LIST

TYPE	VOLTAGE	STROKE	POWER CONSUMPTION	WEIGHT
S-MC163-24	24 V AC/DC +/- 10 %	Max. 30 mm	6 VA	4.0 kg
S-MC163-230	230 V AC +6 % / -10 %	Max. 30 mm	12 VA	4.0 kg

1) Actuating time freely adjustable, presetting is marked with *

2) Only rectified alternating voltage

3) Invertible input and output signal

4) Freely adjustable

Electric actuators with microcontroller

DIGICONTROL S-MC250-...

for two-way and three-way valves

V-BR206GF-... | V-BR306GF-...

V-BR216GF-... | V-BR316GF-...

Data sheet number 84760

Electric actuators with microcontroller for two-way and three-way valves

Features

- Microprocessor controlled with automatic self-calibration on start up
- LED indication of actuator status
- Signal processing by a wear-free distance measuring system by means of a Hall sensor
- Permanent storage of stroke in EPROM memory, values can not be lost
- Wire break recognition in 2...10 V DC and 4...20 mA operation
- Bonnet detachable in four positions, 90° locking, no screws required
- Safety position for switching a binary signal (frost protection)
- Pull-out manual adjustment with feedback signal
- Fault recognition in continuous operation (in case of blockage due to external influence)
- Input and output signal independently reversible
- Input signal freely adjustable: 3-point or continuous operation
- Hysteresis adjustable on-site 0.05 V / 0.15 V / 0.3 V or 0.5 V in continuous operation
- Shockproof at 230 V AC, no protective conductor (PE) necessary

**TECHNICAL DATA**

Outputs	0...10 V DC / max. 8 mA / min. 1200 Ohm
Inputs	3-point, 0(2)...10 V DC / 77 kOhm; 0(4)...20 mA / 0,51 kOhm
Frequency	50/60 ± 5 % Hz
Actuating thrust	2.5 kN
Actuating time	5 2.5* 1 s/mm
Operating mode	S3-50 % ED c/h 1200 acc. EN 60034-1
Hysteresis	0.05 0.15 0.3 0.5 V V
End position switch-off	Load-dependent
Protection class	IP54
Operating temperature	0...+60 °C

TYPE LIST

TYPE	VOLTAGE	STROKE	POWER CONSUMPTION	WEIGHT
S-MC250-24	24 V AC/DC +/- 10 %	Max. 60 mm	Max. 18 VA	7.0 kg
S-MC250-230	230 V AC +6 % / -10 %	Max. 60 mm	Max. 25 VA	8.2 kg

- 1) Actuating time freely adjustable, presetting is marked with *
- 2) Only rectified alternating voltage
- 3) Invertible input and output signal
- 4) Freely adjustable

Electric actuators with microcontroller

DIGICONTROL S-MC253-...

for two-way and three-way valves

V-BR216-... | V-BR316-...

V-BR225-... | V-BR325-...

V-BR240S-... | V-BR340S-...

V-BR240E-... | V-BR340E-...

Data sheet number 84770



Electric actuators with microcontroller for two-way and three-way valves

Features

- Microprocessor controlled with automatic self-calibration on start up
- LED indication of actuator status
- Signal processing by a wear-free distance measuring system by means of a Hall sensor
- Permanent storage of stroke in EPROM memory, values can not be lost
- Wire break recognition in 2...10 V DC and 4...20 mA operation
- Bonnet detachable in four positions, 90° locking, no screws required
- Safety position for switching a binary signal (frost protection)
- Pull-out manual adjustment with feedback signal
- Fault recognition in continuous operation (in case of blockage due to external influence)
- Input and output signal independently reversible
- Input signal freely adjustable: 3-point or continuous operation
- Hysteresis adjustable on-site 0.05 V / 0.15 V / 0.3 V or 0.5 V in continuous operation
- Shockproof at 230 V AC, no protective conductor (PE) necessary

TECHNICAL DATA

Outputs	0...10 V DC / max. 8 mA / min. 1200 Ohm
Inputs	3-point, 0(2)...10 V DC / 77 kOhm; 0(4)...20 mA / 0,51 kOhm
Frequency	50/60 ± 5 % Hz
Actuating thrust	2.5 kN
Actuating time	5 2.5* ¹ s/mm
Operating mode	S3-50 % ED c/h 1200 acc. EN 60034-1
Hysteresis	0.05 0.15 0.3 0.5 V V
End position switch-off	Load-dependent
Protection class	IP54
Operating temperature	0...+60 °C

TYPE LIST

TYPE	VOLTAGE	STROKE	POWER CONSUMPTION	WEIGHT
S-MC253-24	24 V AC/DC +/- 10 %	Max. 60 mm	Max. 18 VA	7.4 kg
S-MC253-230	230 V AC +6 % / -10 %	Max. 60 mm	Max. 25 VA	8.6 kg

- 1) Actuating time freely adjustable, presetting is marked with *
- 2) Only rectified alternating voltage
- 3) Invertible input and output signal
- 4) Freely adjustable

Electric actuators with fail-safe function

DIGICONTROL S-MC253-...

for two-way valves

V-BR225

V-BR240E

V-BR240S

Data sheet number 84771

Electric lift drive with micro controller for straight-way valves

Characteristics:

- Electric lift drive with defined end position in case of power failure (drive spindle completely extended)
- Electromechanical safety function (spring), hydraulically suspended
- Controlled by microcontroller with automatic calibration during commissioning
- Drive status visible via LED display
- Line break detection in 2...10 V DC- and 4...20 mA-operation
- Safety position when switching a binary signal (frost protection)
- Disengagable manual adjustment with feedback signal
- Fault detection in continuous operation (in case of blockage due to external influence)
- Input signal Y and output signal X can be inverted independently from each other
- On-site adjustable control: three-point or continuous operation

**TECHNICAL DATA**

Outputs	0...10 V DC / max. 8 mA / min. 1200 Ohm
Inputs	3-point, 0(2)...10 V DC / 77 kOhm; 0(4)...20 mA / 0,51 kOhm
Frequency	50/60 ± 5 % Hz
Actuating time	5 2.5* 1 s/mm
Operating mode	S3-50 % ED c/h 1200 acc. EN 60034-1
Hysteresis	0.05 0.15 0.3 0.5 V V
End position switch-off	Load-dependent
Protection class	IP54
Operating temperature	0...+60 °C
Type examination	<ul style="list-style-type: none"> ■ 97/23/EG ■ EN14597 Abs DX17 ■ EN60730

TYPE LIST

TYPE	VOLTAGE	STROKE	POWER CONSUMPTION	WEIGHT
S-MC253SE-24	24 V AC +/- 10 %	9 mm	Max. 50 VA	13.0 kg

- 1) Actuating time freely adjustable, presetting is marked with *
- 2) Only rectified alternating voltage
- 3) Invertible input and output signal
- 4) Freely adjustable

Electric actuators with microcontroller

DIGICONTROL S-MC500-...

for two-way and three-way valves

V-BR206GF-... | V-BR306GF-...

V-BR216GF-... | V-BR316GF-...

Data sheet number 84780



Electric actuators with microcontroller for two-way and three-way valves

Features

- Microprocessor controlled with automatic self-calibration on start up
- LED indication of actuator status
- Signal processing by a wear-free distance measuring system by means of a Hall sensor
- Permanent storage of stroke in EPROM memory, values can not be lost
- Wire break recognition in 2...10 V DC and 4...20 mA operation
- Bonnet detachable in four positions, 90° locking, no screws required
- Safety position for switching a binary signal (frost protection)
- Pull-out manual adjustment with feedback signal
- Fault recognition in continuous operation (in case of blockage due to external influence)
- Input and output signal independently reversible
- Input signal freely adjustable: 3-point or modulating
- Hysteresis freely adjustable 0.05 V / 0.15 V / 0.3 V or 0.5 V in continuous operation
- Shockproof at 230 V AC, no protective conductor (PE) necessary

TECHNICAL DATA

Outputs	0...10 V DC / max. 8 mA / min. 1200 Ohm
Inputs	3-point, 0(2)...10 V DC / 77 kOhm; 0(4)...20 mA / 0,51 kOhm
Frequency	50/60 ± 5 % Hz
Actuating thrust	5.0 kN
Actuating time	5 2.5* ¹ s/mm
Operating mode	S3-50 % ED c/h 1200 acc. EN 60034-1
Hysteresis	0.05 0.15 0.3 0.5 V V
End position switch-off	Load-dependent
Protection class	IP54
Operating temperature	0...+60 °C

TYPE LIST

TYPE	VOLTAGE	STROKE	POWER CONSUMPTION	WEIGHT
S-MC500-24	24 V AC/DC +/- 10 %	Max. 60 mm	Max. 18 VA	7.0 kg
S-MC500-230	230 V AC +6 % / -10 %	Max. 60 mm	Max. 25 VA	8.2 kg

- 1) Actuating time freely adjustable, presetting is marked with *
- 2) Only rectified alternating voltage
- 3) Invertible input and output signal
- 4) Freely adjustable

Electric actuators with microcontroller

DIGICONTROL S-MC503-...

for two-way and three-way valves

V-BR216-... | V-BR316-...

V-BR225-... | V-BR325-...

V-BR240S-... | V-BR340S-...

V-BR240E-... | V-BR340E-...

Data sheet number 84790

Electric actuators with microcontroller for two-way and three-way valves

Features

- Microprocessor controlled with automatic self-calibration on start up
- LED indication of actuator status
- Signal processing by a wear-free distance measuring system by means of a Hall sensor
- Permanent storage of stroke in EPROM memory, values can not be lost
- Wire break recognition in 2...10 V DC and 4...20 mA operation
- Bonnet detachable in four positions, 90° locking, no screws required
- Safety position for switching a binary signal (frost protection)
- Pull-out manual adjustment with feedback signal
- Fault recognition in continuous operation (in case of blockage due to external influence)
- Input and output signal independently reversible
- Input signal freely adjustable: 3-point or modulating
- Hysteresis freely adjustable 0.05 V / 0.15 V / 0.3 V or 0.5 V in continuous operation
- Shockproof at 230 V AC, no protective conductor (PE) necessary

**TECHNICAL DATA**

Outputs	0...10 V DC / max. 8 mA / min. 1200 Ohm
Inputs	3-point, 0(2)...10 V DC / 77 kOhm; 0(4)...20 mA / 0,51 kOhm
Frequency	50/60 ± 5 % Hz
Actuating thrust	5.0 kN
Actuating time	5 2.5* 1 s/mm
Operating mode	S3-50 % ED c/h 1200 acc. EN 60034-1
Hysteresis	0.05 0.15 0.3 0.5 V V
End position switch-off	Load-dependent
Protection class	IP54
Operating temperature	0...+60 °C

TYPE LIST

TYPE	VOLTAGE	STROKE	POWER CONSUMPTION	WEIGHT
S-MC503-24	24 V AC/DC +/- 10 %	Max. 60 mm	Max. 18 VA	7.4 kg
S-MC503-230	230 V AC +6 % / -10 %	Max. 60 mm	Max. 25 VA	8.6 kg

- 1) Actuating time freely adjustable, presetting is marked with *
- 2) Only retified alternating voltage
- 3) Invertible input and output signal
- 4) Freely adjustable

Electric actuators with microcontroller

DIGICONTROL S-MC1000-...

for two-way and three-way valves

V-BR216GF-... | V-BR316GF-...

Data sheet number 84800



Electric actuators with microcontroller for two-way and three-way valves

Features

- Microprocessor controlled with automatic self-calibration on start up
- LED indication of actuator status
- Signal processing by a wear-free distance measuring System by means of a Hall sensor
- Permanent storage of stroke in EPROM memory, values can not be lost
- Wire break recognition in 2...10 V DC and 4...20 mA operation
- Bonnet detachable in four positions, 90° locking, no screws required
- Safety position for switching a binary signal (frost protection)
- Pull-out manual adjustment with feedback signal
- Fault recognition in continuous operation (in case of blockage due to external influence)
- Input and output signal independently reversible
- Input signal freely adjustable: 3-point or modulating
- Hysteresis freely adjustable 0.05 V / 0.15 V / 0.3 V or 0.5 V in continuous operation
- Shockproof at 230 V AC, no protective conductor (PE) necessary

TECHNICAL DATA

Outputs	0...10 V DC / max. 8 mA / min. 1200 Ohm
Inputs	3-point, 0(2)...10 V DC / 77 kOhm; 0(4)...20 mA / 0,51 kOhm
Frequency	50/60 ± 5 % Hz
Actuating thrust	10 kN
Actuating time	1 s/mm
Operating mode	S3-30 % ED c/h 1200 acc. EN 60034-1
Hysteresis	0.05 0.15 0.3 0.5 V V
End position switch-off	Load-dependent
Protection class	IP54
Operating temperature	0...+60 °C

TYPE LIST

TYPE	VOLTAGE	STROKE	POWER CONSUMPTION	WEIGHT
S-MC1000-24	24 V AC/DC +/- 10 %	Max. 60 mm	Max. 50 VA	11.0 kg
S-MC1000-230	230 V AC +6 % / -10 %	Max. 60 mm	Max. 63 VA	11.0 kg

- 1) Actuating time freely adjustable, presetting is marked with *
- 2) Only retified alternating voltage
- 3) Invertible input and output signal
- 4) Freely adjustable

Electric actuators with microcontroller

DIGICONTROL S-MC1003-...

for two-way and three-way valves

V-BR216-... | V-BR316-...

V-BR225-... | V-BR325-...

V-BR240S-... | V-BR340S-...

V-BR240E-... | V-BR340E-...

Data sheet number 84810

Electric actuators with microcontroller for two-way and three-way valves

Features

- Microprocessor controlled with automatic self-calibration on start up
- LED indication of actuator status
- Signal processing by a wear-free distance measuring system by means of a Hall sensor
- Permanent storage of stroke in EPROM memory, values can not be lost
- Wire break recognition in 2...10 V DC and 4...20 mA operation
- Bonnet detachable in four positions, 90° locking, no screws required
- Safety position for switching a binary signal (frost protection)
- Pull-out manual adjustment with feedback signal
- Fault recognition in continuous operation (in case of blockage due to external influence)
- Input and output signal independently reversible
- Input signal freely adjustable: 3-point or modulating
- Hysteresis freely adjustable 0.05 V / 0.15 V / 0.3 V or 0.5 V in continuous operation
- Shockproof at 230 V AC, no protective conductor (PE) necessary

**TECHNICAL DATA**

Outputs	0...10 V DC / max. 8 mA / min. 1200 Ohm
Inputs	3-point, 0(2)...10 V DC / 77 kOhm; 0(4)...20 mA / 0,51 kOhm
Frequency	50/60 ± 5 % Hz
Actuating thrust	10 kN
Actuating time	1 s/mm
Operating mode	S3-30 % ED c/h 1200 acc. EN 60034-1
Hysteresis	0.05 0.15 0.3 0.5 V V
End position switch-off	Load-dependent
Protection class	IP54
Operating temperature	0...+60 °C

TYPE LIST

TYPE	VOLTAGE	STROKE	POWER CONSUMPTION	WEIGHT
S-MC1003-24	24 V AC/DC +/- 10 %	Max. 80 mm	Max. 50 VA	11.5 kg
S-MC1003-230	230 V AC +6 % / -10 %	Max. 80 mm	Max. 63 VA	11.5 kg

1) Actuating time freely adjustable, presetting is marked with *

2) Only rectified alternating voltage

3) Invertible input and output signal

4) Freely adjustable

Electric actuators with microcontroller

DIGICONTROL S-MC1503-...

for two-way and three-way valves

V-BR216-... | V-BR316-...

V-BR225-... | V-BR325-...

V-BR240S-... | V-BR340S-...

V-BR240E-... | V-BR340E-...

Data sheet number 84820



Electric actuators with microcontroller for two-way and three-way valves

Features

- Microprocessor controlled with automatic self-calibration on start up
- LED indication of actuator status
- Signal processing by a wear-free distance measuring system by means of a Hall sensor
- Permanent storage of stroke in EPROM memory, values can not be lost
- Wire break recognition in 2...10 V DC and 4...20 mA operation
- Bonnet detachable in four positions, 90° locking, no screws required
- Safety position for switching a binary signal (frost protection)
- Pull-out manual adjustment with feedback signal
- Fault recognition in continuous operation (in case of blockage due to external influence)
- Input and output signal independently reversible
- Input signal freely adjustable: 3-point or modulating
- Hysteresis freely adjustable 0.05 V / 0.15 V / 0.3 V or 0.5 V in continuous operation
- Shockproof at 230 V AC, no protective conductor (PE) necessary

TECHNICAL DATA

Outputs	0...10 V DC / max. 8 mA / min. 1200 Ohm
Inputs	3-point, 0(2)...10 V DC / 77 kOhm; 0(4)...20 mA / 0,51 kOhm
Frequency	50/60 ± 5 % Hz
Actuating thrust	15 kN
Actuating time	2 s/mm
Operating mode	S3-30 % ED c/h 1200 acc. EN 60034-1
Hysteresis	0.05 0.15 0.3 0.5 V V
End position switch-off	Load-dependent
Protection class	IP54
Operating temperature	0...+60 °C

TYPE LIST

TYPE	VOLTAGE	STROKE	POWER CONSUMPTION	WEIGHT
S-MC1503-24	24 V AC/DC +/- 10 %	Max. 80 mm	Max. 50 VA	11.5 kg
S-MC1503-230	230 V AC +6 % / -10 %	Max. 80 mm	Max. 63 VA	11.5 kg

- 1) Actuating time freely adjustable, presetting is marked with *
- 2) Only rectified alternating voltage
- 3) Invertible input and output signal
- 4) Freely adjustable

Control and shutoff valves

DIGICONTROL V-BR12

for actuators S-M130/140/180

Data sheet number 85210

Intermediate flange butterfly valve for use in HVAC, sanitary, service water and industrial plants for different media from -10 to +110 °C.

Features

- Tight-closing damper
- Control and shut-off butterfly valves for open and closed circuits
- Centrally mounted valve disk
- Rotary actuator with disengageable actuator
- Direction of rotation indicator

TECHNICAL DATA

Incident flow	From both sides if required
Seat ring	EPDM
Valve disk	DN25 – DN40: austenitic cast steel 1.4408 DN50 – DN400: spheroidal cast iron GGG40 EN- JS1030 with Nylon11 coating
Shaft sealing	EPDM
Medium	Cold-, hot- and industrial water, water with max. 50 % antifreeze fluid and anti corrosion fluid: glycol, glycerin, ethylene-glycol, propylene-glycol, ethanol, methanol, Antifrogen® N+L
Pressure stage	PN 6 - 16
Overall length	According to EN 558-1 basic series 20
Leakage rate	EN 1349 - seat leakage VI G1 (closes tightly)
Spindle	CrNi-steel 1.4405
Mounting	Intermediate flange design with centring lugs PN 6-16
Housing	Grey cast iron GG25 EN-JL1040 with polyester power coating

TYPE LIST

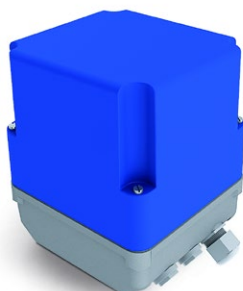
TYPE	DIAMETER NOMINAL	KVS
V-BR12-25	DN 25	52 m ³ /h
V-BR12-32	DN 32	72 m ³ /h
V-BR12-40	DN 40	126 m ³ /h
V-BR12-50	DN 50	124 m ³ /h
V-BR12-65	DN 65	243 m ³ /h
V-BR12-80	DN 80	397 m ³ /h
V-BR12-100	DN 100	723 m ³ /h
V-BR12-125	DN 125	1083 m ³ /h
V-BR12-150	DN 150	1591 m ³ /h
V-BR12-200	DN 200	2852 m ³ /h



Rotary drive for control and shutoff valves

DIGICONTROL S-M130

for control and shutoff valves V-BR12



Rotary drive for the operation of control and shutoff valves in water-side systems.

TECHNICAL DATA

Inputs	3-point
Frequency	50/60 ± 5 % Hz
Actuating time	130 s/mm
Operating mode	S1-100 % ED c/h 1200 EN 60034-1
End position switch-off	Is set to travel-dependent
Protection class	IP54
Ambient temperature	0...50 °C

TYPE LIST

TYPE	VOLTAGE	POWER CONSUMPTION	TORQUE	WEIGHT
S-M130N	230 V AC +6 % / -10 %	6.5 VA	35 Nm	1.2 kg
S-M130K	24 V AC +/- 10 %	8 VA	35 Nm	1.2 kg

ACCESSORY

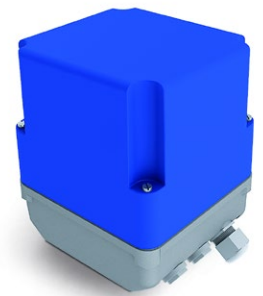
TYPE	DESCRIPTION
S-AE01.1	2 switches (WE3/WE4), potential free, infinitely adjustable, rated load: max. 10 A / 250 V AC
S-AE07	Potentiometer with attachment 0.2 / 1 / 10 kOhm 1.5 VA

Rotary drive for control and shutoff valves

DIGICONTROL S-M140

for control and shutoff valves V-BR12

Rotary drive for the operation of control and shutoff valves in water-side systems.



TECHNICAL DATA

Inputs	3-point
Frequency	50/60 ± 5 % Hz
Actuating time	10 s/mm
Operating mode	S3-50 % ED c/h 1200 acc. EN 60034-1
End position switch-off	Is set to travel-dependent
Protection class	IP54
Ambient temperature	0...50 °C

TYPE LIST

TYPE	VOLTAGE	POWER CONSUMPTION	TORQUE	WEIGHT
S-M140N	230 V AC +6 % / -10 %	55 VA	50 Nm	3 kg
S-M140K	24 V AC +/- 10 %	57 VA	50 Nm	3 kg

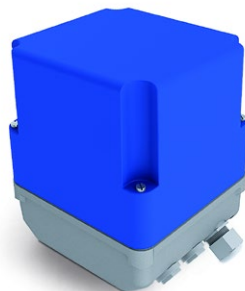
ACCESSORY

TYPE	DESCRIPTION
S-AE05.1	Actuator heating 24 V 25 VA
S-AH-230	Actuator heating 230 V 25 VA
S-AE01.1	2 switches (WE3/WE4), potential free, infinitely adjustable, rated load: max. 10 A / 250 V AC
S-AE07	Potentiometer with attachment 0.2 / 1 / 10 kOhm 1.5 VA

Rotary drive for control and shutoff valves

DIGICONTROL S-M180

for control and shutoff valves V-BR12



Rotary drive for the operation of control and shutoff valves in water-side systems.

TECHNICAL DATA

Inputs	3-point
Frequency	50/60 ± 5 % Hz
Actuating time	130 s/mm
Operating mode	S3-60 % ED c/h 1200 EN 60034-1
End position switch-off	Is set to travel-dependent
Protection class	IP54
Ambient temperature	0...50 °C

TYPE LIST

TYPE	VOLTAGE	POWER CONSUMPTION	TORQUE	WEIGHT
S-M180N	230 V AC +6 % / -10 %	26 VA	80 Nm	3 kg
S-M180K	24 V AC +/- 10 %	26 VA	80 Nm	3 kg

ACCESSORY

TYPE	DESCRIPTION
S-AE05.1	Actuator heating 24 V 25 VA
S-AH-230	Actuator heating 230 V 25 VA
S-AE07	Potentiometer with attachment 0.2 / 1 / 10 kOhm 1.5 VA
S-AE01.1	2 switches (WE3/WE4), potential free, infinitely adjustable, rated load: max. 10 A / 250 V AC

Butterfly valves with actuator

DIGICONTROL V-BR12-xxM**TYPE LIST**

TYPE	CLOSING PRESSURE/KPA
V-BR12-25M130K	1000
V-BR12-32M130K	1000
V-BR12-40M130K	1000
V-BR12-50M130K	1200
V-BR12-65M130K	1200
V-BR12-80M130K	1200
V-BR12-25M130N	1000
V-BR12-32M130N	1000
V-BR12-40M130N	1000
V-BR12-50M130N	1200
V-BR12-65M130N	1200
V-BR12-80M130N	1200
V-BR12-25M140K	1000
V-BR12-32M140K	1000
V-BR12-40M140K	1000
V-BR12-50M140K	1200
V-BR12-65M140K	1200
V-BR12-80M140K	1200
V-BR12-100M140K	350
V-BR12-25M140N	1000
V-BR12-32M140N	1000
V-BR12-40M140N	1000
V-BR12-50M140N	1200
V-BR12-65M140N	1200
V-BR12-80M140N	1200
V-BR12-100M140N	350
V-BR12-125M180K	350
V-BR12-150M180K	350
V-BR12-200M180K	350
V-BR12-125M180N	350
V-BR12-150M180N	350
V-BR12-200M180N	350

